

**TECHNICAL MANUAL**

**ORGANIZATIONAL, DIRECT SUPPORT AND GENERAL SUPPORT  
MAINTENANCE REPAIR  
PARTS AND SPECIAL TOOLS LISTS  
(INCLUDING DEPOT MAINTENANCE REPAIR PARTS)**

**AIR CONDITIONER, VERTICAL: COMPACT,  
SELF-CONTAINED, AIR COOLED,  
ELECTRIC MOTOR DRIVEN  
115 VOLTS, AC, 50/60 HERTZ, SINGLE PHASE  
6000 BTU/HR COOLING, 4500 BTU/HR HEATING  
(HARVEY W. HOTTEL MODEL CV-6-5/6-15)  
NSN 4120-00-935-1608**

**This copy is a reprint which includes current  
pages from Changes 1.**

CHANGE  
NO. 2

HEADQUARTERS  
DEPARTMENT OF THE ARMY  
WASHINGTON, D. C., 15 July 1991

Organizational, Direct Support and General Support Maintenance  
Repair Parts and Special Tools List  
(Including Depot Maintenance Repair Parts)

AIR CONDITIONER, VERTICAL COMPACT, SELF-CONTAINED,  
AIR COOLED, ELECTRIC MOTOR DRIVEN 115 VOLTS,  
AC, 50/60 HERTZ, SINGLE PHASE 6000 BTU/HR COOLING,  
4500 BTU/HR HEATING (HARVEY W. HOTTEL MODEL CV-6-5/6-15)  
NSN 4120-00-935-1608

Approved for public release; distribution is unlimited

TM 5-4120-336-24P, 20 December 1978, is changed as follows:

1. Remove and insert pages as indicated below. New or changed text material is indicated by a vertical bar in the margin. An illustration change is indicated by a miniature pointing hand.

Remove pages

11 through 14  
23 and 24  
37 and 38  
41/42

Insert pages

11 through 14  
23 and 24  
37 and 38  
41/42

3. Retain this sheet in front of manual for reference purpose.

By Order of the Secretary of the Army:

CARL E. VUONO  
*General, United States Army*  
*Chief of Staff*

Official:

PATRICIA P. HICKERSON  
*Colonel, United States Army*  
*The Adjutant General*

DISTRIBUTION: To be distributed in accordance with DA Form 12-25E, (qty rqr bl no. 0116).

CHANGE }  
NO. 1 }

HEADQUARTERS  
DEPARTMENT OF THE ARMY  
WASHINGTON, D.C., 28 January 1987

Organizational, Direct Support and General Support  
Maintenance Repair Parts and Special Tools Lists  
(Including Depot Maintenance Repair Parts)

AIR CONDITIONER, VERTICAL: COMPACT,  
SELF-CONTAINED, AIR-COOLED,  
ELECTRIC MOTOR DRIVEN  
115 VOLTS, AC, 50/60 HERTZ, SINGLE PHASE  
6000 BTU/HR COOLING, 4500 BTU/HR HEATING  
(HARVEY W. HOTTEL MODEL CY6-5/6-15)  
NSN 4120-01-172-8841

TM 5-4120-336-24P, 20 December 1978, is changed as follows:

1. Title is changed as shown above.
2. Remove and insert pages as indicated below. New or changed text material is indicated by a vertical bar in the margin. An illustration change is indicated by a miniature pointing hand.

Remove pages

i/ii  
19 and 20

Insert pages

i/ii  
19 and 20

3. Retain this sheet in front of manual for reference purposes.

By Order of the Secretary of the Army:

**JOHN A. WICKHAM, JR.**  
*General, United States Army*  
*Chief of Staff*

Official:

**R. L. DILWORTH**  
*Brigadier General, United States Army*  
*The Adjutant General*

DISTRIBUTION:

To be distributed in accordance with DA Form 12-25A, Organizational, Direct Support and General Support Maintenance requirements for Air Conditioner, Vertical Compact, Self-Contained, 600 BTU Cool/4500 BTU Heat, 115V, AC, 50/60HZ, 1PH (CV-6-5/6-15)

**ORGANIZATIONAL, DIRECT SUPPORT AND GENERAL SUPPORT  
MAINTENANCE REPAIR PARTS AND SPECIAL TOOLS LISTS  
(INCLUDING DEPOT MAINTENANCE REPAIR PARTS)**

**Air Conditioner, Vertical: Compact,  
Self-Contained, Air-Cooled,  
Electric Motor Driven  
115 Volts, AC, 50/60 Hertz, Single Phase  
6000 BTU/HR Cooling, 4500 BTU/HR Heating  
(Harvey W. Hottel Model CY6-5/6-15)  
NSN 4120-01-172-8841**

Current as of 12 September 1978

REPORTING ERRORS AND RECOMMENDING IMPROVEMENTS

You can help improve this manual. If you find any mistake or if you know of a way to improve the procedures, please let us know. Mail your letter, DA Form 2028 (Recommended Changes to Publications and Blank Forms), or DA Form 2028-2 located in the back of this manual direct to: Commander, U.S. Army Troop Support Command, ATTN: AMSTR-MCTS, 4300 Goodfellow Boulevard, St. Louis, MO 63120-1798. A reply will be furnished directly to you.

Table of Contents

	Listing Page	Illus Figure
SECTION I. INTRODUCTION .....	1	
SECTION II. REPAIR PARTS LIST .....	5	
Group 01. Casing, Guards, Grilles, Drain Tubes, Panels and Filter. ....	5	
Guard, Duct Cover and Screen .....		1
Casing Grilles, Panels, Filter and Drain Tube .....		2
02. Junction Box Assembly .....	11	2
Junction Box .....		3
Start Relay and Start Capacitor .....		3.1
03. Control Panel Assembly .....	15	4
04. Block-Off Panel Assembly .....	17	5
05. Fan Assembly .....	19	6
06. Motor Assembly .....	20	7
07. Heater Assembly .....	21	8
08. Wiring Harness and Clamps .....	23	9
09. Refrigeration Piping .....	25	10
10. Valves, Pressure Switches and Piping .....	29	11
11. High and Low Pressure Switches and Enclosure .....	32	12
12. Compressor Assembly .....	33	13
13. Accessory Items .....	34	14
14. Bulk Material .....	35	
SECTION III. SPECIAL TOOLS LIST (Not Applicable)		
SECTION IV. NATIONAL STOCK NUMBER AND REFERENCE NUMBER		
INDEX .....	37	

\* This manual supersedes TM 5-4120-336-24P, 15 November 1974, including all changes.

## Section I. INTRODUCTION

### 1. Scope.

This manual lists repair parts, special tools, test, measurement, and diagnostic equipment (TMDE), and other support equipment required for operation and performance of organizational, direct support, general support and depot maintenance of the air conditioner.

### 2. General.

**a. Section II - Repair Parts List.** A list of repair parts authorized for use in the performance of maintenance. The list also includes parts which must be removed for replacement of the authorized parts. Parts lists are composed of assembly groups in ascending numerical sequence, with the parts in each group listed in figure and item number sequence. Bulk materials are listed in NSN sequence, as the last group in Section II.

**b. Section III - Special Tools List. (Not applicable).**

**c. Section IV - National Stock Number and Part Number Index.** A list, in ascending numerical sequence, of all National Stock Numbers appearing in the listings, followed by a list, in alphanumeric sequence, of all part numbers appearing in the listings. National Stock Number and part numbers are cross-referenced to each illustration figure and item number appearance.

### 3. Explanation of Columns.

The following provides an explanation of columns found in the tabular listings:

**a. Illustration.** This column is divided as follows:

**(1) Figure Number.** Indicates the figure number of the illustration in which the item is shown.

**(2) Item Number.** The number used to identify each item called out in the illustration.

**b. Source, Maintenance, and Recoverability Codes (SMR).**

**(1) Source Code.** Source codes are assigned to support items to indicate the manner of acquiring support items for maintenance, repair, or overhaul of end items. Source codes are entered in the first and second positions of the Uniform SMR Code format as follows:

Code	Definition
PA	Item procured and stocked for anticipated or known usage.
PB	Item procured and stocked for insurance purpose because essentiality dictates that a minimum quantity be available in the supply systems.
PC	Item procured and stocked and which otherwise would be coded PA except that it is deteriorative in nature.
PD	Support item, excluding support equipment, procured for initial issue or outfitting and stocked only for subsequent or additional initial issues or outfitting. Not subject to automatic replenishment.
PE	Support equipment procured and stocked for initial issue or outfitting to specified maintenance repair activities.
PF	Support equipment which will not be stocked but which will be centrally procured on demand.
PG	Item procured and stocked to provide for sustained support for the life of the equipment. It is applied to an item peculiar to the equipment which, because of probable discontinuance or shutdown of production facilities, would prove uneconomical to reproduce at a later time.
KD	An item of a depot overhaul/repair kit and not purchased separately. Depot kit defined as a kit that provides items required at the time of overhaul or repair.
KF	An item of a maintenance kit and not purchased separately. Maintenance kit defined as a kit that provides an item that can be replaced at organizational or intermediate levels of maintenance.
KB	Item included in both a depot overhaul/repair kit and a maintenance kit.
MO	Item to be manufactured or fabricated at organizational level.
MF	Item to be manufactured or fabricated at the direct support maintenance level.
MH	Item to be manufactured or fabricated at the general support maintenance

Code	Definition
	level.
MD	Item to be manufactured or fabricated at the depot maintenance level.
AO	Item to be assembled at organizational level.
AF	Item to be assembled at direct support maintenance level.
AH	Item to be assembled at general support maintenance level.
AD	Item to be assembled at depot maintenance level.
XA	Item is not procured or stocked because the requirements for the item will result in the replacement of the next higher assembly.
XB	Item is not procured or stocked. If not available through salvage, requisition.
XD	A support item that is not stocked. When required, item will be procured through normal supply channels.

**NOTE**

***Cannibalization or salvage may be used as a source of supply for any items source coded above except those coded XA or XD.***

**(2) Maintenance Code.** Maintenance codes are assigned to indicate the levels of maintenance authorized to use and repair support items. The maintenance codes are entered in the third and fourth positions of the Uniform SMR Code format as follows:

**(a)** The maintenance code entered in the third position will indicate the lowest maintenance level authorized to remove, replace, and use the support item. The maintenance code entered in the fourth position will indicate one of the following levels of maintenance.

Code	Application/Explanation
C	Crew or operator maintenance performed within organizational maintenance.
O	Support item is removed, replaced, used at the organizational level.
I	Support item is removed, replaced, used by the direct support element of integrated direct support maintenance.
F	Support item is removed, replaced, used at the direct support level.

Code	Application/Explanation
H	Support item is removed, replaced, used at the general support level.
D	Support items that are removed, replaced, used at depot, mobile depot, specialized repair activity only.

**NOTE**

***Codes "I" and "F" will be considered the same by direct support units.***

**(b)** The maintenance code entered in the fourth position indicates whether the item is to be repaired and identifies the lowest maintenance level with the capability to perform complete repair (i.e., all authorized maintenance functions). This position will contain one of the following maintenance codes:

Code	Application/Explanation
O	The lowest maintenance level capable of complete repair of the support item is the organizational level.
F	The lowest maintenance level capable of complete repair of the support item is the direct support level.
H	The lowest maintenance level capable of complete repair of the support item is the general support level.
D	The lowest maintenance level capable of complete repair of the support item is the depot level.
L	Repair restricted to designated specialized repair activity.
Z	Nonreparable. No repair is authorized.
B	No repair is authorized. The item may be reconditioned by adjusting, lubricating, etc., at the user level. No parts or special tools are procured for the maintenance of this item.

**(3) Recoverability Code.** Recoverability codes are assigned to support items to indicate the disposition action on unserviceable items. The recoverability code is entered in the fifth position of the Uniform SMR Code format as follows:

Recoverability Codes	Definition
Z	Nonreparable item. When unserviceable, condemn and dispose at the level indicated in

Recoverability Codes	Definition
	Position 3.
O	Reparable item. When uneconomically reparable, condemn and dispose at organizational level.
F	Reparable item. When uneconomically reparable, condemn and dispose at the direct support level.
H	Reparable item. When uneconomically reparable, condemn and dispose at the general support level.
D	Reparable item. When beyond lower level repair capability, return to depot. Condemnation and disposal not authorized below depot level.
L	Reparable item. Repair, condemnation, and disposal not authorized below depot/specialized repair activity level.
A	Item requires special handling or condemnation procedures because of specific reasons (i.e., precious metal content, high dollar value, critical material or hazardous material). Refer to appropriate manuals/directives for specific instructions.

**c. National Stock Number.** Indicates the National Stock Number assigned to the item and will be used for requisitioning purposes.

**d. Part Number.** Indicates the primary number used by the manufacturer which controls the design and characteristics of the item by means of its engineering drawings, specifications standards, and inspection requirements to identify an item or range of items.

**NOTE**

**When a stock numbered item is requisitioned, the repair part received may have a different part number than the part being replaced.**

**e. Federal Supply Code for Manufacturer (FSCM).** The FSCM is a 5-digit numeric code listed in SB 708-42 which is used to identify the manufacturer, distributor, or Government agency, etc.

**f. Description.** Indicates the Federal item name and, if required, a minimum description to identify the item. Items that are included in kits and sets are listed below the name of the kit or set with the quantity of each item in the kit or set indicated in the quantity incorporated in unit column. When the part to be used differs between serial numbers of the same model, the effective serial numbers are shown as the last line of the description. In the Special Tools List, the initial basis of issue (1301) appears as the last line in the entry for each special tool, TMDE, and support equipment. When density of equipments supported exceeds density spread indicated in the basis of issue, the total authorization is increased accordingly.

**g. Unit of Measure (U/M).** Indicates the standard of the basic quantity of the listed items as used in performing the actual maintenance function. This measure is expressed by a two-character alphabetical abbreviation (e.g., ea, in, pr, etc.). When the unit of measure differs from the unit of issue, the lowest unit of issue that will satisfy the required units of measure will be requisitioned.

**h. Quantity Incorporated in Unit.** Indicates the quantity of the item used in the breakout shown on the illustration figure, which is prepared for a functional group, sub functional group, or an assembly. A "V" appearing in this column in lieu of a quantity indicates that no specific quantity is applicable (e.g., shims, spacers, etc.).

**4. Special Information.**

**a.** Repair parts kits and gasket sets appear as the last entries in the repair parts listing for the figure in which its parts are listed as repair parts or are listed at the end of the repair parts listing for the last figure containing parts of the kit.

**b.** The following publication pertains to the air conditioner and its components.

TM 5-4120-336-14	Operator, Organizational, Direct Support and General Support Maintenance Manual
------------------	---

**c.** Identification of the usable on codes included in the description column of this publication are:

Code	Used On
CUS	Serial No. Ranges 100-399
CVS	Serial No. Ranges 400 and up

Items not coded are applicable to all models.

**5. How to Locate Repair Parts.**

**a.** When National Stock Number or Part Number is Unknown:

**(1) First.** Using the table of contents, determine the assembly group within which the repair part belongs. This is necessary since illustrations are prepared for assembly groups, and listings are divided into the same groups.

**(2) Second.** Find the illustration covering the assembly group to which the repair part belongs.

**(3) Third.** Identify the repair part on the illustration and note the illustration figure and item number of the repair part.

**(4) Fourth.** Using the Repair Parts Listing, find the figure and item number noted on the illustration.

**b.** When National Stock Number or Part Number is Known.

**(1) First.** Using the Index of National Stock Numbers and Part Numbers, find the pertinent National stock number or part number. This index is in

ascending NSN sequence followed by a list of part numbers in ascending alphanumeric sequence, cross-referenced to the illustration figure number and item number.

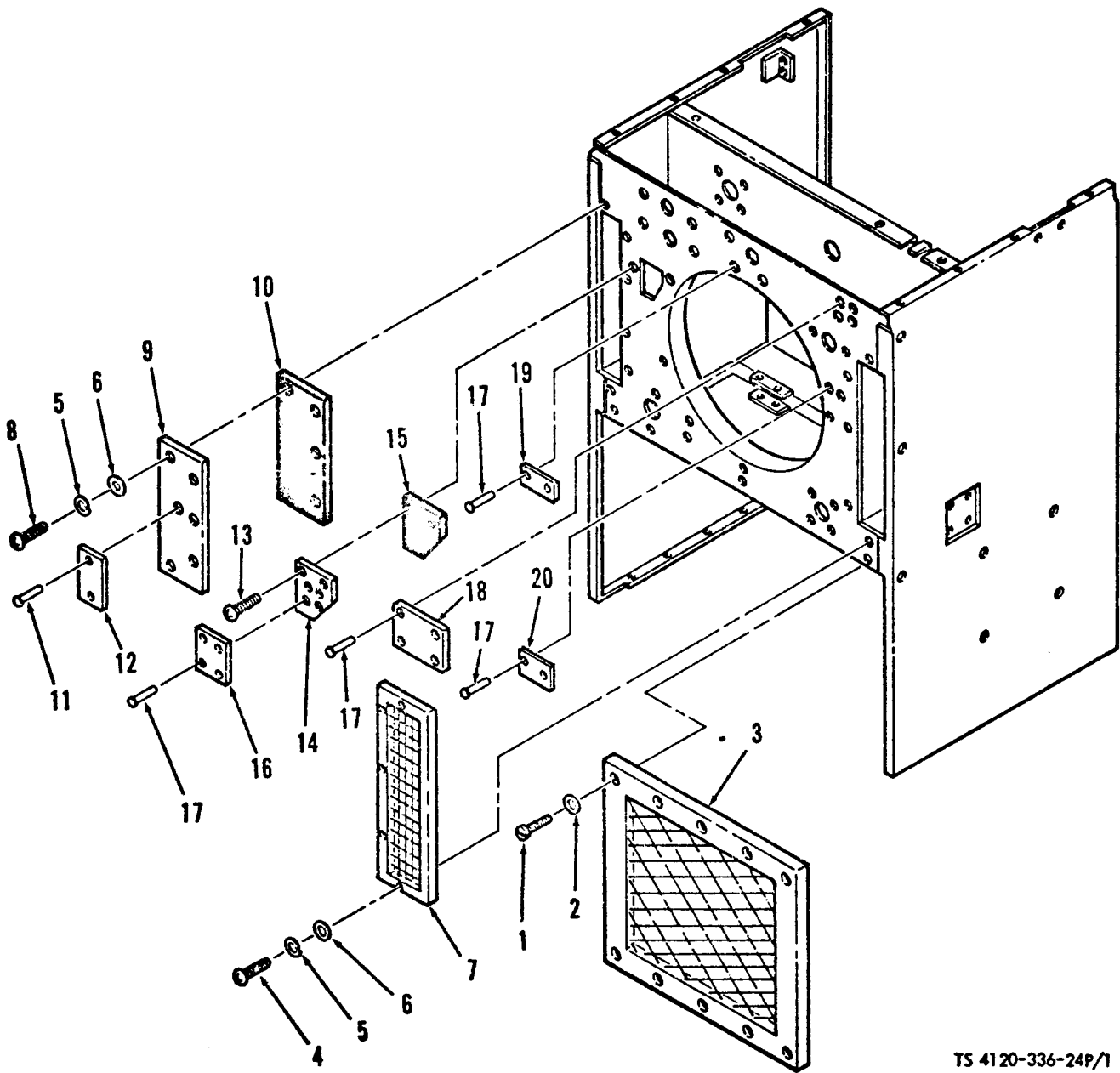
**(2) Second.** After finding the figure and item number, locate the figure and item number in the repair parts list.

**6. Abbreviations.**

<b>Abbreviations</b>	<b>Explanation</b>
V	as required
ea	each
ft	feet (foot)
rl	roll
id	inside diameter
in.	inch(es)
lg	long (length)
mtg	mounting (s)
No.	Number(s)
od	outside diameter
u/w	used with



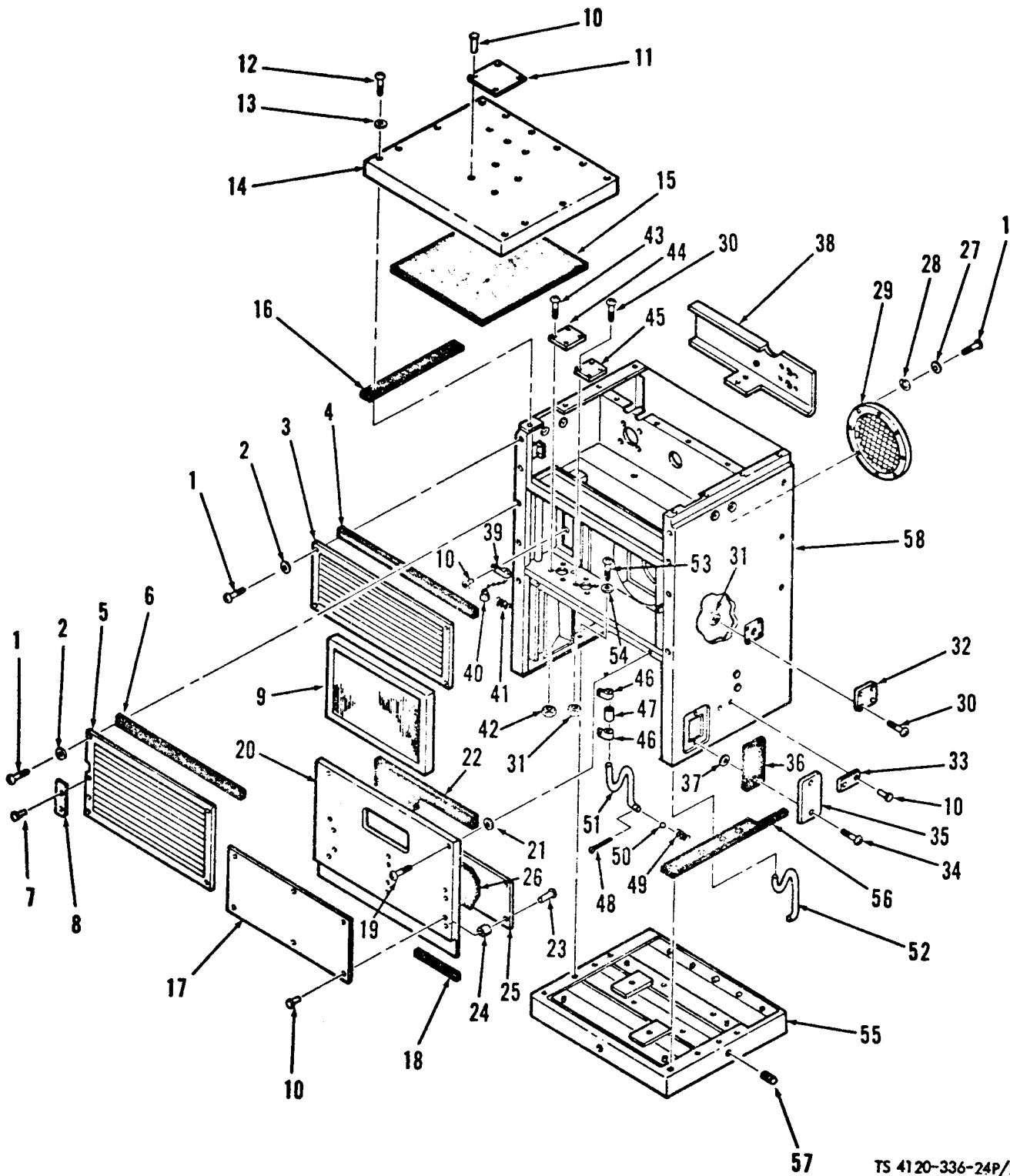
(1)	(2)	(3)	(4)	(5)	(6)		(7)	(8)	
ILLUSTRATION									
(A)	(B)	NATIONAL			DESCRIPTION			QTY	
FIG	ITEM	STOCK	PART					INC	
NO	NO	CODE	NUMBER	NUMBER	FSCM	USABLE ON CODE	U/M	IN	
SECTION II - REPAIR PARTS LIST									
GROUP 01 - CASING, GUARDS, GRILLES, DRAIN TUBES, PANELS AND FILTER									
1	1	PAOZZ	5305-00-993-1848	MS35207-265	96906	SCREW, MACHINE: CONDENSER COIL GUARD MTG, NO. 10-32 THD SIZE, 3/4 IN. LG		EA	8
1	2	PAOZZ	5310-00-821-2366	13214E3469	97403	WASHER: CONDENSER COIL GUARD MTG		EA	8
1	3	XBOZZ		13216E9517	97403	GUARD, CONDENSER COIL		EA	1
1	4	PAOZZ	5305-00-984-6195	MS35205-247	96906	SCREW, MACHINE: SCREEN MTG, NO. 8-32 THD SIZE, 3/4 IN. LG		EA	5
1	5	PAOZZ	5310-00-045-3299	MS35338-42	96906	WASHER, LOCK: SCREEN AND DUCT COVER MTG		EA	10
1	6	PAOZZ	5310-00-809-8544	MS27183-7	96906	WASHER, FLAT: SCREEN AND DUCT COVER MTG		EA	10
1	7	XBOZZ		13214E3544	97403	SCREEN, FRESH AIR		EA	1
1	8	PAOZZ	5305-00-984-6196	MS35206-248	96906	SCREW, MACHINE: DUCT COVER MTG, NO. 8-32 THD SIZE, 7/8 IN. LG		EA	5
1	9	PAOZZ		13214E3551	97403	COVER: CRB DUCT		EA	1
1	10	MDOZZ		ASTMD1056SBE42CF	81346	GASKET: COVER MANUFACTURE FROM P/N ASTMD1056SBF42CF (81346)		EA	V
1	11	PAOZZ	5320-00-932-1972	AD42H	07707	RIVET, BLIND: INFORMATION PLATE MTG	CVC	EA	2
1	12	XBOZZ		13217E6814	97403	PLATE, INFORMATION: CIRCUIT BREAKER RESET	CVC	EA	1
1	13	PAOZZ	5305-00-984-6194	MS35206-246	96906	SCREW, MACHINE: ACCESS COVER MTG, NO. 8-32 THD SIZE, 5/8 IN. LG	CVC	EA	2
1	14	XDOZZ		13218E8065	97403	COVER, ACCESS	CVC	EA	1
1	14	XDOZZ		13218E6977	97403	COVER, SERVICE	CUS	EA	1
1	15	MDOZZ		ASTMD1056SBF42C	81346	GASKET, ACCESS COVER MANUFACTURE FROM P/N ASTMD1056SBE42CF2 (81346)	CVC	EA	V
1	16	XBOZZ		13218E8064	97403	PLATE, INFORMATION: SERVICE VALVES	CVC	EA	1
1	17	PAOZZ	5320-00-882-8388	AD43H	07707	RIVET, BLIND: INSTRUCTION PLATE MTG	CVC	EA	12
1	18	XBOZZ		13214E3662	97403	PLATE, INFORMATION: REFRIGERANT CHARGING	CVC	EA	1
1	19	XBOZZ		13218E7078	97403	PLATE, INFORMATION: FAN ROTATION		EA	1
1	20	XBOZZ		13211E8215	97403	PLATE, MOISTURE INDICATION		EA	1



TS 4120-336-24P/1

Figure 1. Guard, duct cover and screen.

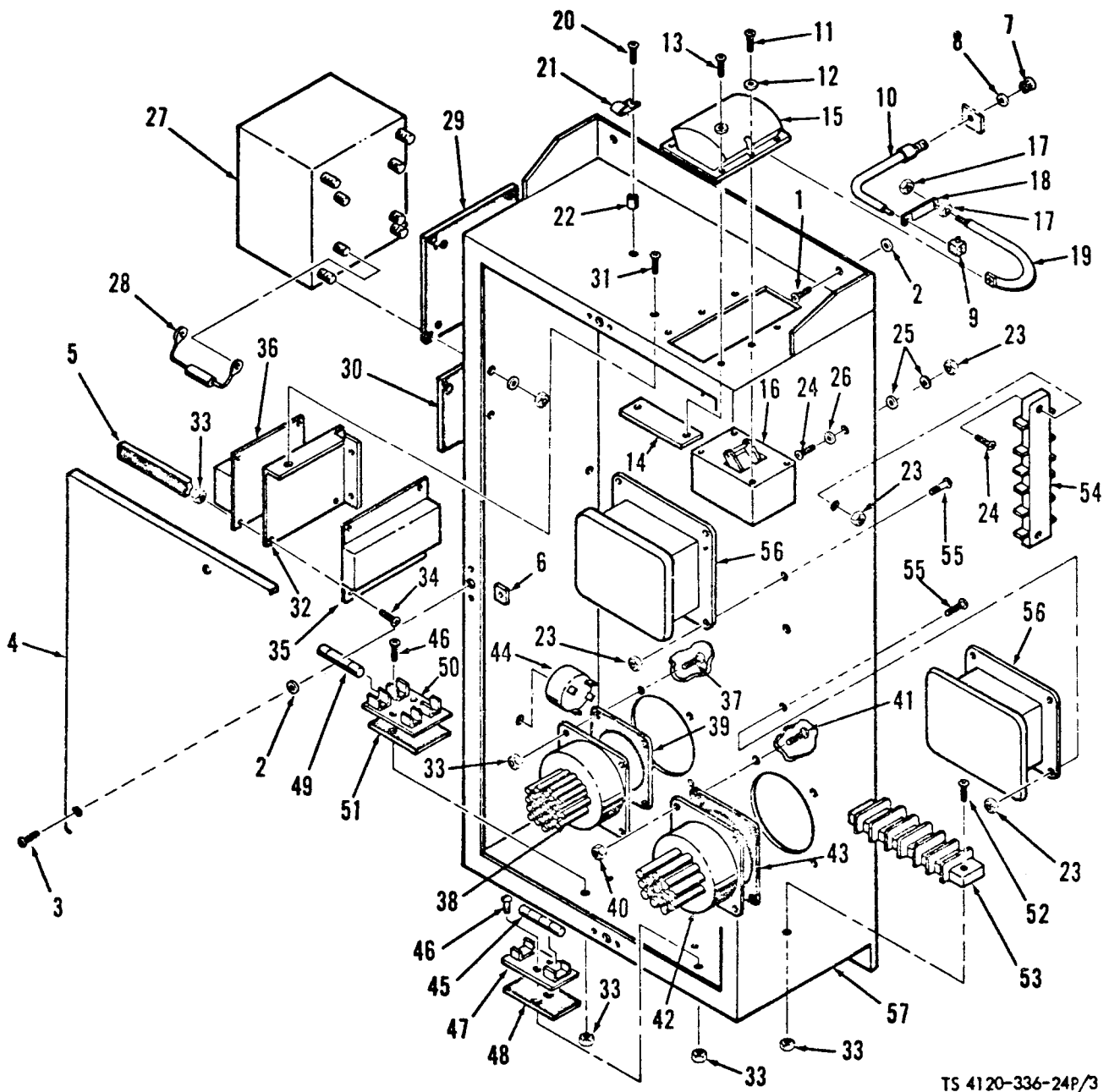
TM5-4120-336-24P									
(1)	(2)	(3)	(4)	(5)	(6)			(7)	(8)
ILLUSTRATION									
(A)	(B)		NATIONAL		DESCRIPTION				QTY
FIG	ITEM	SMR	STOCK	PART					INC
NO	NO	CODE	NUMBER	NUMBER	FSCM		USABLE ON CODE	U/M	IN
									UNIT
2	1	PAOZZ	5305-00-984-6195	MS35206-247	96906	SCREW MACHINE: GRILLE MTG AND FAN GUARD MTG, NO. 8-32 THD SIZE, 3/4 IN. LG		EA	16
2	2	PAOZZ		13214E3469	97403	WASHER FLAT: GRILLE MTG		EA	8
2	3	XBOZZ		13214E3704-2	97403	GRILLE: DISCHARGE	CVC	EA	1
2	3	XBOZZ		13214E3477	97403	GRILLE	CUS	EA	1
2	4	MDOZZ		ASTMD1056SBE42	81346	GASKET: GRILLE MANUFACTURE FROM P/N ASTMD1056SBE42CF2 (81346)	CVC	EA	V
2	5	XBOZZ		13214E3706-2	97403	GRILLE: INTAKE	CVC	EA	1
2	5	XBOZZ		13214E3478	97403	GRILLE	CUS	EA	1
2	6	MDOZZ		ASTMD1056SBE	81349	GASKET: GRILLE MANUFACTURE FROM P/N ASTMD1056SBE42CF2 (81346)	CVC	EA	1
2	7	PAOZZ	5320-00-296-3092	MS20426AD4-5-5	96906	RIVET, SOLID: PLATE MTG, 1/8 IN. DIA, 11/32 IN. LG		EA	2
2	8	XBOZZ		13217E2344	97403	PLATE, INFORMATION: DAMPER OPERATION		EA	1
2	9	PAOZZ	4130-00-105-9292	908015	82866	FILTER, AIR: 13-5/8 IN. W, 8-9/16 IN. HIGH, 7/8 IN. THK		EA	1
2	10	PAOZZ	5320-00-932-1972	AD42H	07707	RIVET BLIND: INFORMATION PLATE MTG, IDENTIFICATION PLATE MTG, CHAIN ASSEMBLY MTG		EA	12
2	11	XBOZZ		R655-71C111	97450	PLATE, IDENTIFICATION		EA	1
2	12	PAOZZ	5305-00-984-6194	MS35206-246	96906	SCREW, MACHINE: TOP PANEL MTG, NO. 8-32 THD SIZE, 5/8 IN.		EA	15
2	13	PAOZZ	5330-00-285-9314	R655-71C110	97450	WASHER ASSEMBLY: TOP PANEL MTG	CVC	EA	15
2	13	PAOZZ		13220E5281	97403	WASHER SEAL	CUS	EA	15
2	14	XBOZZ		13214E3384	97403	PANEL, TOP		EA	1
2	15	MDOZZ		MILI145	81349	INSULATION: TOP PANEL, 25 IN. THK MANUFACTURE FROM NSN 5640-00-116-6870		EA	1
2	16	MDOZZ		ASTMD1056SBE42CF	81346	GASKET: TOP PANEL MANUFACTURE FROM P/N ASTMD1056SBE42CF2 (81346)		EA	1
2	17	XBOZZ		13218E7079-6	97403	PLATE, INFORMATION, SCHEMATIC REFRIGERATION	CVC	EA	1
2	17	XBOZZ		13218E7079	97403	PLATE, INFORMATION, SCHEMATIC REFRIGERATION	CUS	EA	1
2	18	MDOZZ				GASKET: LOWER PANEL MANUFACTURE FROM P/N ASTMD1056SBE42CF2 (81346)		EA	1
2	19	PAOZZ	5305-00-283-4649	12-11-713-11	94222	SCREW, PANEL FASTENER: LOWER PANEL MTG		EA	2
2	20	XBOZZ		13218E9948	97403	PANEL, LOWER		EA	1
2	21	PAOZZ	5310-00-880-9344	12-11014-12	94222	WASHER, RETAINING: LOWER PANEL MTG		EA	2
2	22	MDOZZ		MILI14511	81349	INSULATION: LOWER PANEL, .50 IN. THK MANUFACTURE FROM NSN 5640-00-116-6870		EA	1
2	23	PAOZZ	5320-00-847-4471	AD45H	07707	RIVET, BLIND: INFORMATION PLATE MTG		EA	6
2	24	MDOZZ		AA6061T5251	80201	SPACER: INFORMATION PLATE MTG MANUFACTURE FROM P/N AA6061T5251NOD (80204)		EA	1
2	25	XBOZZ		13218E9882	97403	PLATE, INFORMATION, WIRING DIAGRAM	CVC	EA	1
2	25	XBOZZ		13220E6701	97403	PLATE, INFORMATION, WIRING DIAGRAM	CUS	EA	1
2	26	MDOZZ				INSULATION: LOWER PANEL, .50 IN. THK MANUFACTURE FROM NSN 5640-00-116-6870		EA	1



TS 4120-336-24P/2

Figure 2. Casing grilles, panels, filter and drain tube.

TM5-4120-336-24P									
(1)	(2)	(3)	(4)	(5)	(6)			(7)	(8)
ILLUSTRATION									
(A)	(B)		NATIONAL		DESCRIPTION				QTY
FIG	ITEM	SMR	STOCK	PART					INC
NO	NO	CODE	NUMBER	NUMBER	FSCM		USABLE ON CODE	U/M	UNIT
2	27	PAOZZ	5310-00-045-3299	MS35338-42	96906	WASHER, LOCK: FAN GUARD MTG		EA	8
2	28	PAOZZ	5310-00-809-8544	MS27183-7	96906	WASHER, FLAT: FAN GUARD MTG		EA	8
2	29	XBOZZ		13214E3556	97403	GUARD, FAN		EA	1
2	30	PAOZZ	5305-00-889-2999	MS35206-217	96906	SCREW, MACHINE: COVER MTG, NO. 4-40 THD SIZE, 1/2 IN. LG		EA	12
2	31	PAOZZ	5310-00-088-0551	MS21044N04	96906	NUT, SELF-LOCKING: COVER MTG, NO. 4-40 THD SIZE		EA	8
2	32	XBOZZ		13214E3471-1	97403	COVER: ALTERNATOR ELECTRICAL RECEPTACLE		EA	2
2	33	XBOZZ		13218E7077	97403	PLATE, INFORMATION: CIRCUIT BREAKER RESET		EA	1
2	34	PAOZZ	5325-00-530-9963	12S1-14-1AA	71286	STUD, TURNLOCK FASTENER: COVER MTG		EA	2
2	35	XBOZZ		13218E7076	97403	COVER: CIRCUIT BREAKER ACCESS		EA	1
2	36	MDOZZ		ASTMD1056SBE42CF2	81346	GASKET: COVER MANUFACTURE FROM P/N ASTMD1056SBE42CF2 (81346)		EA	1
2	37	PAOZZ	5310-00-530-9963	5S3-1	71286	WASHER, RETAINING		EA	2
2	38	XBOZZ		13214E3546	97403	CHANNEL	CVC	EA	1
2	39	PBOZZ	4130-00-106-5657	13211E8322	97403	CHAIN ASSEMBLY		EA	1
2	40	XBOZZ		13211E8305	97403	PENDANT		EA	1
2	41	XBOZZ		MS24586C48	96906	SPRING		EA	1
2	42	PAOZZ	5310-00-081-8087	MS21044N06	96906	NUT, SELF-LOCKING: COVER MTG, NO. 6-32 THD SIZE		EA	4
2	43	PAOZZ	5305-00-984-4992	MS35206-232	96906	SCREW, MACHINE: COVER MTG, NO. 6-32 THD SIZE, 3/4 IN. LG		EA	4
2	44	XBOZZ		13214E3471-2	97403	COVER: ALTERNATOR ELECTRICAL RECEPTACLE		EA	1
2	45	XBOZZ		13214E3471-1	97403	COVER: ALTERNATOR ELECTRICAL RECEPTACLE		EA	1
2	46	PAOZZ	4730-00-908-3194	MS35842-11	96906	CLAMP, HOSE		EA	4
2	47	PAOZZ		13211E8323	97403	HOSE, DRAIN		EA	2
2	48	PAOZZ	5315-00-234-1856	MS24665-155	96906	PIN, COTTER		EA	2
2	49	XBOZZ	5360-00-240-6526	13211E8412	97403	SPRING		EA	2
2	50	XOBZZ	3110-00-136-2696	13211E8411	97403	BALL		EA	2
2	51	XBOZZ		13214E3486	97403	TUBE, DRAIN: LEFT SIDE		EA	1
2	52	XBOZZ		13214E3484	97403	TUBE, DRAIN: RIGHT SIDE		EA	1
2	53	PAOZZ	5305-00-068-0505	MS90726-5	96906	SCREW, MACHINE: CASING ATTACHMENT, 1/4-28 THD SIZE, 5/8 IN. LG		EA	8
2	54	PAOZZ	5310-00-809-4058	MS27183-10	96906	WASHER, FLAT: CASING ATTACHMENT		EA	8
2	55	XBOZZ		13214E3386	97403	PANEL, BOTTOM		EA	1
2	56	MOOZZ		ASTMD1056SBE42CF	81346	GASKET: BOTTOM PANEL MANUFACTURE FROM P/N ASTMD1056SBE42CF2 (81346)		EA	1
2	57	PAOZZ	4730-00-007-9399	13211E8178	97403	PLUG, PIPE: DRAIN CONNECTION		EA	4
2	58	XAOZZ		13214E3365	97403	CASING	CVC	EA	1
2	58	XBOZZ		13220E6995	97403	CASING	CUS	EA	1



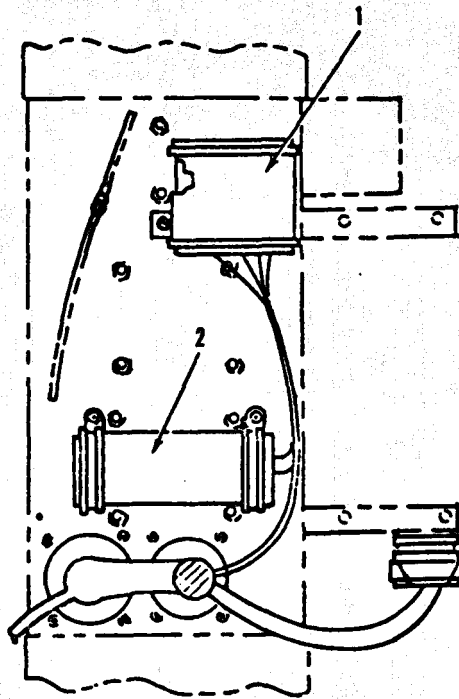
TS 41 20-336-24P/3

Figure 3. Junction box.

(1) ILLUSTRATION (A) FIG NO	(2) ITEM (B) NO	(3) SMR CODE	(4) NATIONAL STOCK NUMBER	(5) PART NUMBER	(6) DESCRIPTION FSCM	USABLE ON CODE	(7) U/M	(8) QTY INC IN UNIT
GROUP 02 - JUNCTION BOX ASSEMBLY								
3	1	PAOZZ	5330-00-808-0794	12-11-203-11	94222 SCREW, PANEL FASTENER: JUNCTION BOX MTG		EA	4
3	2	PAOZZ	5310-00-880-9344	12-11014-12	94222 WASHER, RETAINING: JUNCTION BOX MTG		EA	8
3		XBOZZ		13218E9887-1	97403 JUNCTION BOX ASSEMBLY (COMPONENTS SAME AS P/N 13219E2927)	CVC	EA	1
3		XBOZZ		13218E2927	97403 JUNCTION BOX ASSEMBLY	CUS	EA	1
3	3	PAOZZ	5305-00-356-6102	12-11-303-11	94222 SCREW, PANEL FASTENER: COVER MTG		EA	4
3	4	XBOZZ		13214E3412	97403 COVER: JUNCTION BOX		EA	1
3	5	MDOZZ			GASKET: JUNCTION BOX COVER MANUFACTURE FROM P/N ASTMD1056SBE42CF2 (81346)		EA	V
3	6	PAOZZ	5310-00-275-6813	C13853-1420	78553 NUT, SHEET SPRING: JUNCTION BOX COVER MTG		EA	4
3	7	PAOZZ	5355-00-171-2442	B43310-1	41625 KNOB: CIRCUIT BREAKER RESET		EA	1
3	8	PAOZZ	5310-00-596-7691	MS35335-32.	96906 WASHER, LOCK: CIRCUIT BREAKER RESET		EA	1
3	9	XBOZZ	2990-00-451-4838	A37693	41625 STOP CONTROL ASSEMBLY: CIRCUIT BREAKER RESET	CVC	EA	1
3	10	XBOZZ		B48701X22-00	41625 CONTROL ASSEMBLY, PUSH-PULL: CIRCUIT BREAKER RESET		EA	1
3	11	PAOZZ	5305-01-025-5770	MS35206-226	96906 SCREW, MACHINE: CIRCUIT BREAKER MTG, NO. 6-32 THD SIZE, 1/4 IN. LG		EA	4
3	12	PAOZZ	5310-00-579-0079	MS35333-37	96906 WASHER, LOCK: CIRCUIT BREAKER MTG		EA	6
3	13	PAOZZ	5305-00-984-4988	MS35206-228	96906 SCREW, MACHINE: CIRCUIT BREAKER COVER MTG		EA	2
3	14	XBOZZ		13215E9828	97403 COVER: CIRCUIT BREAKER OPENING		EA	1
3	15	XBOZZ		006-10245	74193 COVER: CIRCUIT BREAKER		EA	1
3	16	PAOZZ	5925-00-009-3005	APGH11RR1799-4	81541 CIRCUIT BREAKER	CVC	EA	1
3	16	PAOZZ		13216E6206-4	97403 CIRCUIT BREAKER	CUS	EA	1
3	17	PAOZZ	5310-00-902-6676	MS21083N3	96906 NUT, SELF-LOCKING: PLATE MTG, NO. 10-32 THD SIZE		EA	2
3	18	XBOZZ		R655-71C143	97450 PLATE, ACTUATOR: CIRCUIT BREAKER RESET	CVC	EA	1
3	18	XBOZZ		13220E5386	97403 PLATE, ACTUATOR	CUS	EA	1
3	19	XBOZZ		R655-71C142-2	97450 ARM, ACTUATOR: CIRCUIT BREAKER RESET	CVC	EA	1
3	19	XBOZZ		13220E5385-2	97403 ARM, ACTUATOR	CUS	EA	1
3	20	PAOZZ	5305-00-984-6196	MS35206-248	96906 SCREW, MACHINE: CLAMP MTG, NO. 8-32 THD SIZE, 7/8 IN. LG		EA	2
3	21	PAOZZ	5340-00-247-6226	MS21104D3	96906 CLAMP, LOOP: CIRCUIT BREAKER RESET		EA	2
3	22	XBOZZ		13211E8376-5	97403 SPACER: CLAMP MTG		EA	2
3	23	PAOZZ	5310-00-877-5797	MS21044N3	96906 NUT, SELF-LOCKING: GROUND LUG MTG, NO. 10-32 THD SIZE		EA	13
3	24	PAOZZ	5305-00-995-3444	MS35207-266	96906 SCREW, MACHINE: GROUND LUG MTG, NO. 10-32 THD SIZE, 7/8 IN. LG		EA	5
3	25	PAOZZ	5310-00-014-5850	MS27183-42	96906 WASHER, FLAT: GROUND LUG MTG		EA	2
3	26	PAOZZ	5310-00-045-3296	MS35338-43	96906 WASHER, LOCK: GROUND LUG MTG		EA	1

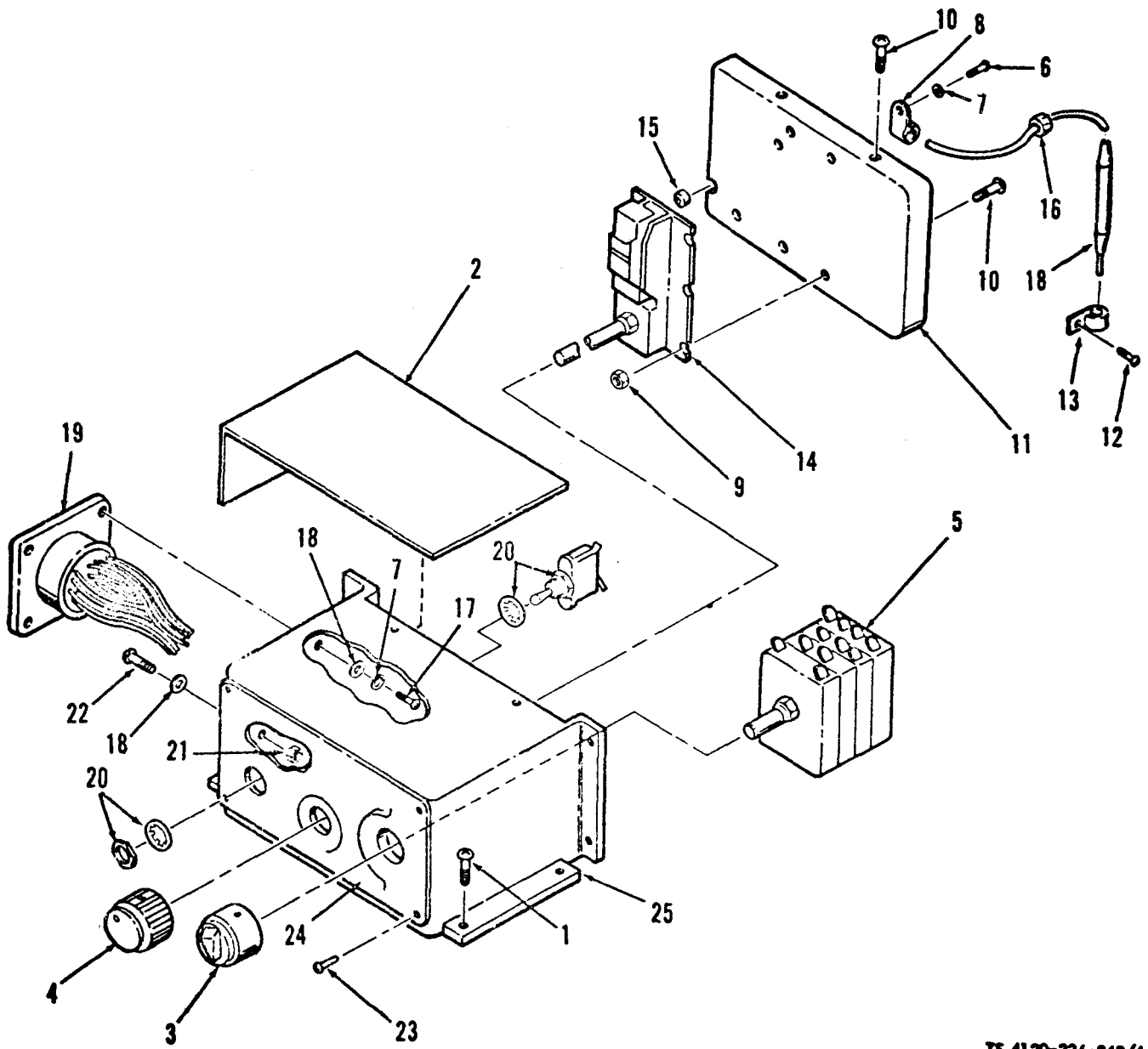
(1) ILLUSTRATION (A) FIG NO	(2) (B) ITEM NO	(3) SMR CODE	(4) NATIONAL STOCK NUMBER	(5) PART NUMBER	(6) FSCM	(6) DESCRIPTION	USABLE ON CODE	(7) U/M	(8) QTY INC IN UNIT
3	27	PAOZZ	5950-00-111-4720	41100	73386	TRANSFORMER, STEPDOWN: 115 VOLTS TO 30 VOLTS	CVC	EA	1
3	27	PAOZZ		C1-13473	95970	TRANSFORMER STEPDOWN	CUS	EA	1
3	28	XBOZZ		R655-71C118	97450	CAPACITOR ASSEMBLY: RFI	CVC	EA	1
3	28	PBOZZ	5910-01-052-5751	13219E9891	97403	CAPACITOR, ASSEMBLY	CUS	EA	1
3	29	XBOZZ	9905-00-165-7470	13214E3685-2	97403	PLATE, IDENTIFICATION: TRANSFORMER		EA	1
3	30	MOOZZ				GASKET: CONTROL BOX MTC (MANUFACTURE FROM P/N ASTMD1056SBE42CF2 (81346		EA	1
3	31	PAOZZ	5305-00-984-6193	MS352206-245	96906	SCREW, MACHINE: BRACKET MTG, NO. 8-32 THD SIZE, 1/2 IN. LG		EA	3
3	32	XBOZZ		13218E9897	97403	BRACKET: TIME DELAY MTG	EA	1	
3	33	PAOZZ	5310-00-081-8087	MS21044N06	96906	NUT, SELF-LOCKING: TIME DELAY RELAY MTG, NO. 6-32 THD SIZE		EA	122
3	34	PAOZZ	5305-00-984-4989	MS35206-229	96906	SCREW, MACHINE: TIME DELAY RELAY MTG, NO. 6-32 THD SIZE, 7/16 IN. LG		EA	4
3	35	PAOZZ	5945-00-007-7669	13216E6182-3	97403	RELAY, TIME DELAY: COMPRESSOR START, 30 SECOND DELAY		EA	1
3	36	PAOZZ	5945-00-007-7668	13216E6182-2	97403	RELAY, TIME DELAY: FAN SPEED, 15 SECOND DELAY		EA	1
3	37	PAOZZ	5305-00-984-4992	MS35206-232	96906	SCREW, MACHINE: HARNESS MTG, NO. 6-32 THD SIZE, 3/4 IN. LG	CVC	EA	4
3	38	MOOZZ				WIRING HARNESS: JUNCTION BOX MANUFACTURE FROM NSN 6145-00-578-7517. 6145-00-578-7516 AND P/N MILI23053-2CCL1 (81349)		EA	1
3		PAOZZ	5935-00-755-2892	MS3102R28-98	96906	CONNECTOR, RECEPTACLE		EA	1
3		PAOZZ	5940-00-143-4774	MS25036-153	96906	TERMINAL LUG		EA	7
3		PAOZZ	5940-00-283-5280	MS25036-106	96906	TERMINAL LUG		EA	2
3		PAOZZ	5940-00-143-4780	MS25036-108	96906	TERMINAL LUG		EA	1
3	39	XBOZZ	5330-00-828-3628	MS51007-10	96906	GASKET, RUBBER: HARNESS MTG		EA	1
3	40	PAOZZ	5310-00-811-3494	MS21044N08	96906	NUT, SELF-LOCKING: HARNESS MTG, NO. 8-32 THD SIZE		EA	4
3	41	PAOZZ	5305-00-984-6195	MS35206-247	97906	SCREW, MACHINE: HARNESS MTG, NO. 8-32 THD SIZE, 3/4 IN. LG		EA	4
3	42	MOOZZ				WIRING HARNESS: JUNCTION BOX MANUFACTURE FROM NSN 6145-00-578-7517, 6145-00-578-7521 AND P/N MILI23053-2CCL1 (81349)		EA	1
3		PAOZZ		MS3102R32-70	96906	CONNECTOR, RECEPTACLE		EA	1
3		PAOZZ	5940-00-150-4682	13216E6192	97403	TERMINAL, QUICK DISCONNECT		EA	1
3		PAOZZ	5940-00-143-4780	MS25036-108	96906	TERMINAL LUG		EA	1
3		PAOZZ	5940-00-143-4794	MS25036-112	96906	TERMINAL LUG		EA	1
3		PAOZZ	5940-00-143-4775	MS25036-156	96906	TERMINAL LUG		EA	2
3		PAOZZ	5940-00-143-4774	MS25036-153	96906	TERMINAL LUG		EA	9
3		PAOZZ	5940-00-283-5280	MS25036-106	96906	TERMINAL LUG		EA	10
3	43	XBOZZ	5330-00-914-7651	MS51007-12	96906	GASKET, RUBBER: HARNESS MTG		EA	1
3	44	PAOZZ	5861-00-106-5259	SS0329	58849	RECTIFIER, SEMICONDUCTOR		EA	1





LUS FIG. NO.	TION (b) TEM NO.	(2) SMR CODE	(3) NATIONAL STOCK NUMBER	(4) PART NUMBER	(5) FSCM	(6) DESCRIPTION	USABLE ON CODE	(7) I/M	(8) TY IC. N NI
3	45	PAOZZ	5920-00-243-9331	F09A250V2A	81349	FUSE: CONTROL CIRCUIT, 2 AMPERES		EA	
3	46	PAOZZ	5305-00-059-4553	MS35190-238		SCREW, MACHINE: FUSEHOLDER MTG, NO. 6-32 THD SIZE, 1/2 IN. LG		EA	4
3	47	XBOZZ	5920-00-240-4066	4515	71400	FUSEHOLDER		EA	1
3	48	XBOZZ		13214E3814	97403	INSULATION: FUSEHOLDER MTG		EA	1
3	49	PAOZZ	5920-00-939-5442	KAW5	71400	FUSE: CONTROL CIRCUIT, 5 AMPERES		EA	1
3	50	XBOZZ	5920-00-887-6491	2819	71400	FUSEHOLDER		EA	1
3	51	XBOZZ		13214E3726	97403	INSULATION: FUSEHOLDER MTG		EA	1
3	52	PAOZZ	5305-00-889-3001	MS35206-231	96906	SCREW, MACHINE: TERMINAL BOARD MTG, NO. 6-32 THD SIZE		EA	2
3	53			899JJ6F	75382	TERMINAL BOARD	CVC	EA	1
3	54	XBOZZ		39TB8	75382	TERMINAL BOARD		EA	1
3	55	PAOZZ	5305-00-989-7435	MS35207-264	96906	SCREW, MACHINE: RELAY MTG, NO. 10-32 THD SIZE		EA	4
3	56	PAOZZ	5945-00-549-6348	MS24192D1	96906	RELAY: COMPRESSOR CONTROL AND HEATER CONTROL		EA	2
3	57	XAOZZ		13218E9913	97403	JUNCTION BOX	CVC	EA	1
3	57	XBOZZ		13218E9914	97403	JUNCTION BOX	CUB	EA	1
3.1	1	PAOZZ	5945-00-482-5771	13216E6240-1	80089	RELAY, START	CUB	EA	1
3.1	2	PAOZZ	5910-01-067-0000	35 F212BA6	56699	CAPACITOR, START	CUB	EA	1

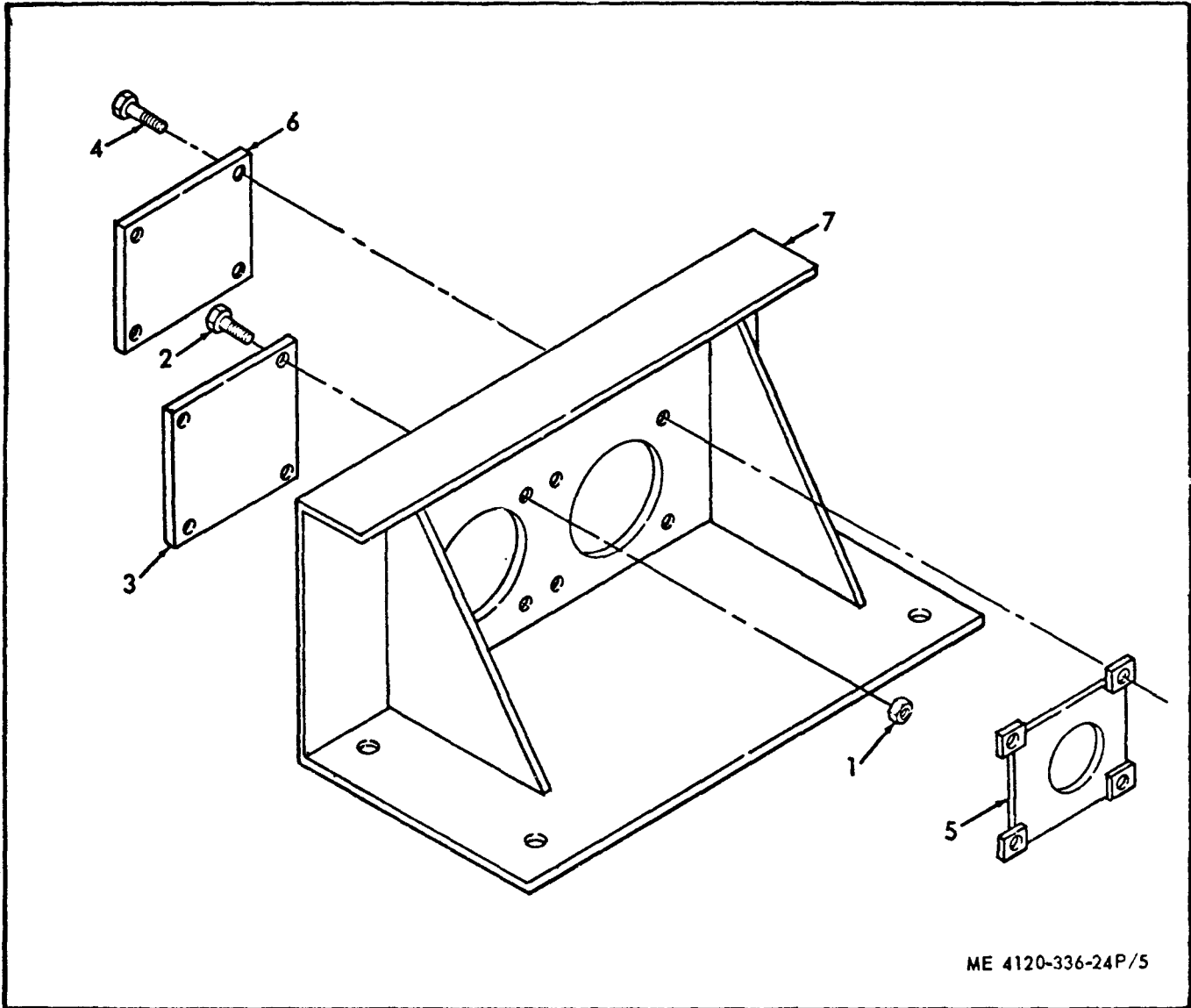
Figure 3.1. Start relay and start capacitor (600 BYU/HR cooling).



TS 4120-336-24P/4

Figure 4. Control panel assembly.

(1) ILLUSTRATION (A) FIG NO	(2) ITEM (B) NO	(3) SMR CODE	(4) NATIONAL STOCK NUMBER	(5) PART NUMBER	(6) DESCRIPTION FSCM	(7) USABLE ON CODE	(8) QTY INC IN UNIT
GROUP 03 - CONTROL PANEL ASSEMBLY							
4	1	PAOZZ	5305-00-993-1851	MS35207-267	96906 SCREW, MACHINE: CONTROL PANEL MTG, NO. 10-32 THD SIZE, 1 IN. LG		EA 4
4		AOOOO		13218E9908-3	97403 CONTROL PANEL ASSEMBLY	CVC	EA 1
4		XBOZZ		13219E2934	97403 CONTROL, PANEL, ASSEMBLY	CUS	EA 1
4	2	XBOZZ	5970-00-173-2385	13214E3762	97403 INSULATION, ELECTRICAL: CONTROL PANEL		EA 2
4	3	PBOZZ	5355-00-579-2896	MS25165-1	96906 KNOB, CONTROL: ROTARY SWITCH		EA 1
4	4	PBOZZ	5355-00-472-9354	MS91528-1C4B	96906 KNOB, CONTROL: THERMOSTAT		EA 1
4	5	PAOZZ	5930-00-907-8948	8912K216	15605 SWITCH, ROTARY		EA 1
4	6	PAOZZ	5305-00-989-7434	MS35207-263	96906 SCREW, MACHINE: CLAMP MTG, 10-32 THD SIZE, 1/2 IN. LG		EA 1
4	7	PAOZZ	5310-00-045-3296	MS35338-43	96906 WASHER, LOCK: CLAMP MTG		EA 5
4	8	PAOZZ	5340-00-103-2976	MS21919H6	96906 CLAMP, LOOP: THERMOSTAT MTG, 3/8 IN. NOMINAL SIZE		EA 1
4	9	PAOZZ	5310-00-889-2549	MS21045-08	96906 NUT, SELF-LOCKING: THERMOSTAT MTG, NO. 8-32 THD SIZE		EA 4
4	10	PAOZZ	5305-00-984-6193	MS35206-245	96906 SCREW, MACHINE: THERMOSTAT MTG, PANEL MTG, NO. 8-32 THD SIZE, 1/2 IN. LG		EA 8
4	11	XBOZZ		13218E9911	97403 PANEL		EA 1
4	12	PAOZZ	5305-00-984-6194	MS35206-246	96906 SCREW, MACHINE: THERMOSTAT BULB MTG, NO. 8-32 THD SIZE, 5/8 IN. LG		EA 1
4	13	PAOZZ	5340-00-105-8328	MS21104D6	96906 CLAMP, LOOP: THERMOSTAT BULB MTG		EA 1
4	14	PAOZZ	5930-00-923-4176	A19AGF10	92578 THERMOSTAT, TEMPERATURE CONTROL		EA 1
4	15	PAOZZ	5325-00-286-6047	MS35490-1	96906 GROMMET: THERMOSTAT CAPILLARY TUBE		EA 1
4	16	XBOZZ	5325-00-254-4718	1000	75543 GROMMET: THERMOSTAT CAPILLARY TUBE		EA 1
4	17	PAOZZ	5305-00-088-9044	MS35207-260	96906 SCREW, MACHINE: HARNESS MTG, NO. 10-32 THD SIZE		EA 4
4	18	PAOZZ	5310-00-014-5850	MS27183-42	96906 WASHER, FLAT: HARNESS MTG AND GROUND LEAD MTG		EA 7
4	19	MOOOO			97403 WIRING HARNESS: CONTROL PANEL MANUFACTURE FROM P/N MILT53435TYPE1FINISHB (81349) MILI23053-2CL1 (81349) AND NSN 6145-00-578-7517		EA 1
4		PAOZZ		13211E8399C28-17P	97403 CONNECTOR, RECEPTACLE		EA 1
4		PAOZZ	5940-00-143-4774	MS25036-153	96906 TERMINAL LUG		EA 1
4		PAOZZ	5940-00-143-4780	MS25036-108	96906 TERMINAL LUG		EA 1
4		PAOZZ	5940-00-859-4475	13211E8288	97403 SPLICE CONDUCTOR		EA 7
4		PAOZZ	5940-00-283-5280	MS25036-106	96906 TERMINAL LUG		EA 2
4	20	PAOZZ	5930-00-683-1628	MS24523-22	96906 TOGGLE SWITCH: HI-LO SPEED		EA 1
4	21	PAOZZ	5310-00-061-7326	MS21045-3	96906 NUT, SELF-LOCKING: GROUND LEAD MTG, NO. 10-32 THD SIZE	CVC	EA 1
4	22	PAOZZ	5305-00-989-7435	MS35207-264	96906 SCREW, MACHINE: GROUND LEAD MTG, NO. 10-32 THD SIZE, 5/8 IN. LG		EA 1
4	23	PAOZZ	5320-00-932-1972	AD42H	07707 RIVET, BLIND: INFORMATION PLATE MTG		EA 6
4	24	XBOZZ		13218E9912	97403 PLATE, INFORMATION: CONTROL PANEL		EA 1
4	25	XBOZZ		13218E9909	97403 CONTROL PANEL		EA 1



ME 4120-336-24P/5

Figure 5. Block-off panel assembly.

(1) ILLUSTRATION (A) FIG NO	(2) (B) ITEM NO	(3) SMR CODE	(4) NATIONAL STOCK NUMBER	(5) PART NUMBER	(6) FSCM	(6) DESCRIPTION	(7) USABLE ON CODE	(8) QTY INC IN UNIT
GROUP 04 - BLOCK-OFF PANEL ASSEMBLY								
5		AOZZ		13214E3665	97403	PANEL ASSEMBLY: BLOCK-OFF		EA 1
5	1	PAZZ	5310-00-081-8087	MS21044N06	96906	NUT, SELF-LOCKING: COVER MTG, NO. 6-32 THD SIZE		EA 4
5	2	PAZZ	5305-00-889-3001	MS35206-231	96906	SCREW, MACHINE: COVER MTG, NO. 6-32 THD SIZE, 5/8 IN. LG		EA 4
5	3	XBOZZ		13214E3471-2	97403	COVER: ALTERNATOR ELECTRICAL CONNECTOR		EA 1
5	4	PAZZ	5305-00-053-1114	MS24621-11	96906	SCREW, TAPPING: COVER MTG, NO. 4-24 THD SIZE, 1/2 IN. LG		EA 4
5	5	XAOZZ	4130-00-991-8260	C6974-20-41	78553	RETAINER RING: ELECTRICAL CONNECTOR COVER MTG		EA 1
5	6	XBOZZ		13214E3471-1	97403	COVER: ALTERNATOR ELECTRICAL CONNECTOR		EA 1
5	7	XBOZZ		13214E3689	97403	BLOCK-OFF		EA 1

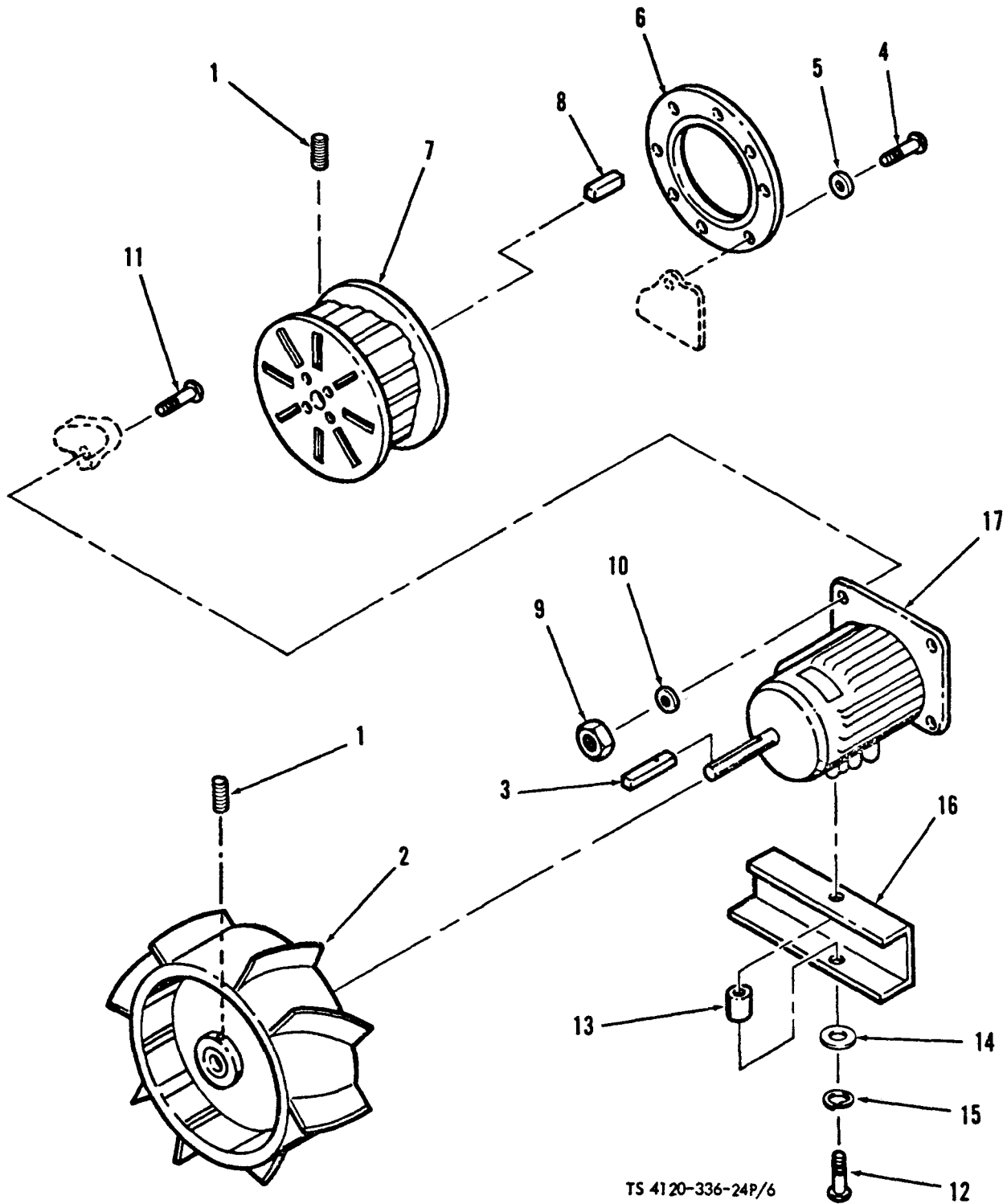
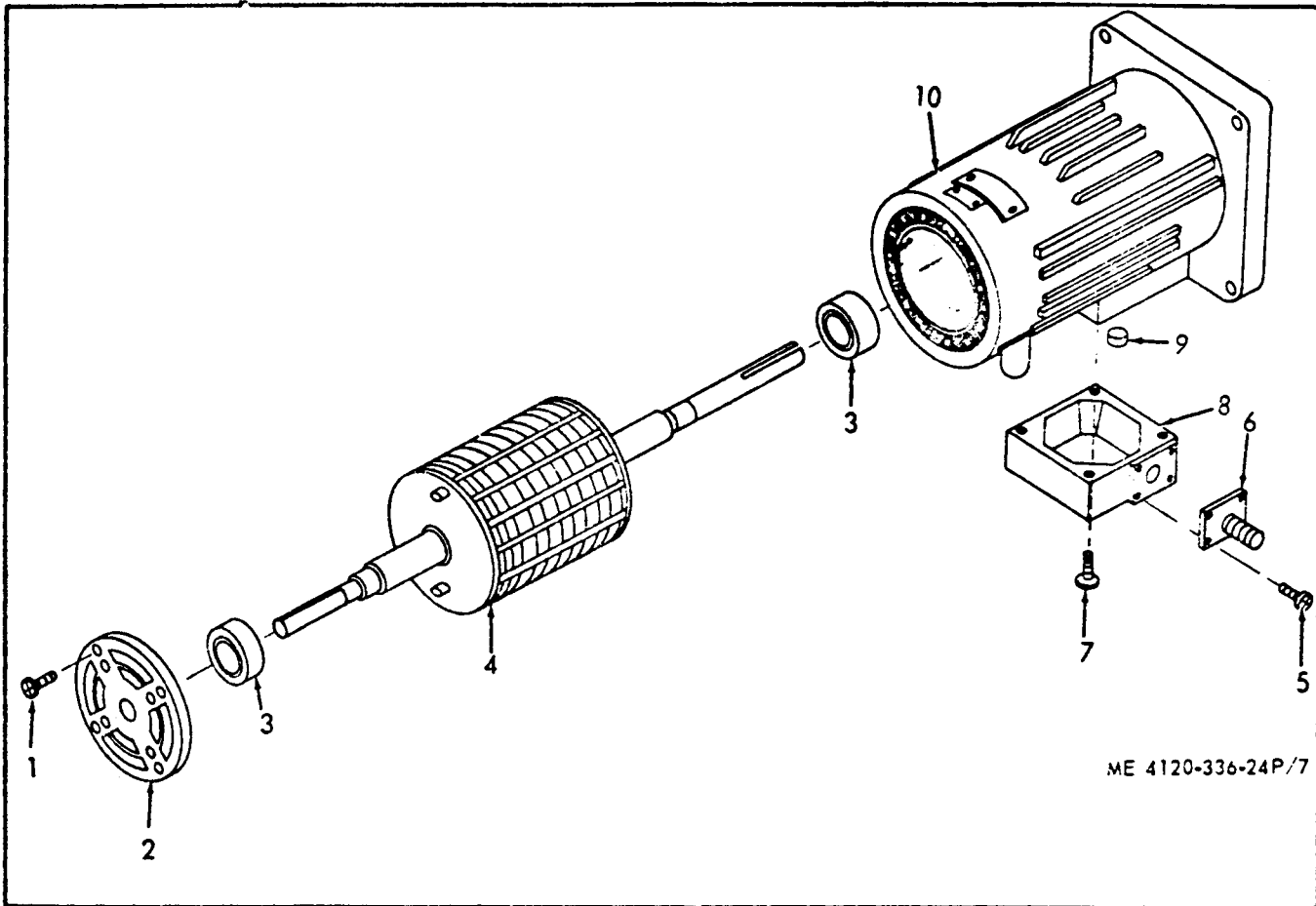


Figure 6. Fan assembly.

(1) ILLUSTRATION (A) FIG NO	(2) (B) ITEM NO	(3) SMR CODE	(4) NATIONAL STOCK NUMBER	(5) PART NUMBER	(6) FSCM	DESCRIPTION	USABLE ON CODE	(7) U/M	(8) QTY INC IN UNIT
GROUP 05 - FAN ASSEMBLY									
6	1	PAOZZ	5305-00-929-6558	MS51021-62	96906	SETSCREW: CONDENSER FAN MTG, EVAPORATOR FAN MTG, 1/4-20 THD SIZE, 3/4 IN. LG		EA	4
6	2	PBOZZ	4140-00-106-2488	13214E3559	97403	IMPELLER, FAN AXIAL		EA	1
6	3	PAOZZ	5315-00-730-4570	MS20066-145	96906	KEY, MACHINE: CONDENSER FAN MTG		EA	1
6	4	PAOZZ	5305-00-984-6194	MS35206-246	96906	SCREW, MACHINE: INLET RING MTG, NO. 8-32 THD SIZE, 5/8 IN. LG		EA	6
6	5	PAOZZ	5310-00-821-2366	13214E3469	97403	WASHER, FLAT: INLET RING MTG		EA	6
6	6	XBOZZ		13214E3547	97403	RING, INLET FAN		EA	1
6	7	XBOZZ		R655-71D114	97450	IMPELLER, FAN, CENTRIFUGAL EVAPORATOR	CVC	EA	1
6	7	PBOZZ		13214E3558	97403	IMPELLER, FAN, CENTRIFUGAL, EVAPORATOR	CUS	EA	1
6	8	PAOZZ	5315-00-730-4564	MS20066-143	96906	KEY, MACHINE: EVAPORATOR FAN MTG		EA	1
6	9	PAOZZ	5310-00-935-9021	MS51943-35	96906	NUT, SELF-LOCKING: FAN MOTOR/MTG, 3/8-16 THD SIZE		EA	4
6	10	PAOZZ	5310-00-080-6004	MS27183-14	96906	WASHER, FLAT: FAN MOTOR MTG		EA	4
6	11	PAOZZ	5305-00-269-3212	MS90725-61	96906	SCREW, MACHINE: FAN MOTOR MTG, 3/8-16 THD SIZE, 1 1/8 IN. LG		EA	4
6	12	PAOZZ	5306-00-225-8503	MS90725-39	96906	SCREW, MACHINE: FAN MOTOR MTG, 5/16-18 THD SIZE, 1 3/4 IN. LG		EA	2
6	13	XBOZZ		13217E5636	97403	SLEEVE: FAN MOTOR MTG		EA	2
6	14	PAOZZ	5310-00-081-4219	MS27183-12	96906	WASHER, FLAT: FAN MOTOR MTG		EA	2
6	15	PAOZZ	5310-00-407-9566	MS35338-45	96906	WASHER, LOCK: FAN MOTOR MTG		EA	2
6	16	XBOZZ		13214E3552	97403	BRACKET: MOTOR MTG		EA	1
6	17	PAOFF	6105-00-103-2164	4715-20	64731	MOTOR, ALTERNATING CURRENT		EA	1

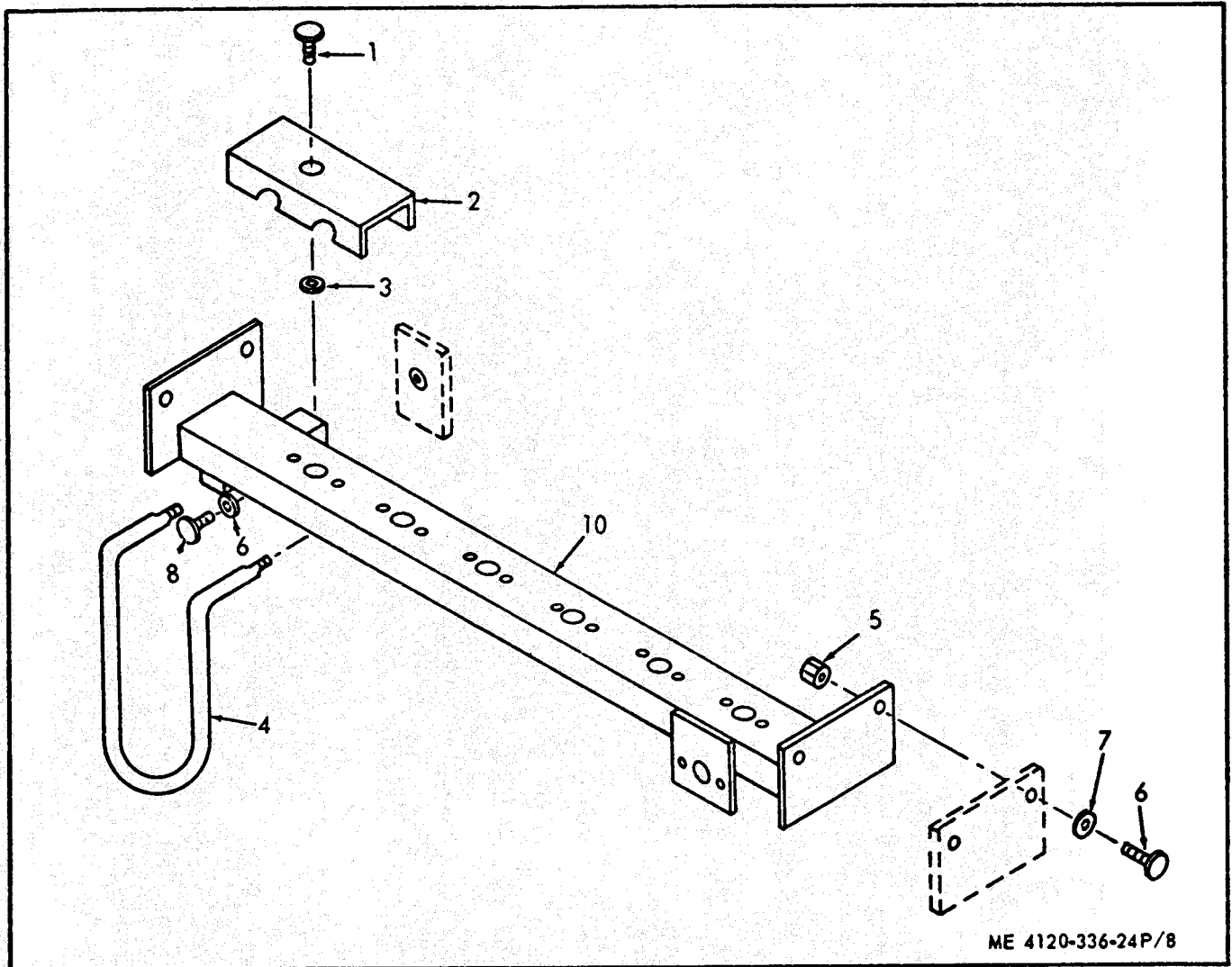


ME 4120-336-24P/7

(1) ILLUSTRATION		(2)	(3)	(4)	(5)	(6)	(7)	(8)
(a) FIG NO	(b) ITEM NO.	SMR CODE	NATIONAL STOCK NUMBER	PART NUMBER	FSCM	DESCRIPTION	U/M	QTY INC IN UNIT
						<i>USABLE ON CODE</i>		
						<b>GROUP 06 - MOTOR ASSEMBLY</b>		
7		PA000	6105-00-103-2164	13214 E3728-1	97403	<b>MOTOR, BLOWER</b>	CVC EA	1
7	1	PA0ZZ	5305-00-409-3795	02-009264-005	64731	<b>SCREW: END BELL MTG</b>	EA	4
7	2	XAFZZ		02-009350-000	64731	<b>END BELL</b>	EA	1
7	3	PAFZZ	1110-00-124-9076	02-010999-20Z	64731	<b>BEARING: ROTOR AND SHAFT</b>	EA	2
7	4	XAFZZ		02-009264-002	64731	<b>ROTOR AND SHAFT</b>	EA	1
7	5	PA0ZZ	5305-00-485-8512	02-009 264-004	64731	<b>SCREW: CONNECTOR MTG</b>	EA	4
7	6	XBOZZ	5935 -00-821-0345	MS3102 R1486P	96906	<b>CONNECTOR: MOTOR</b>	EA	1
7		PA0ZZ	5305-00-486-2597	02-009264-003	64731	<b>SCREW: TERMINAL BOX MTG</b>	EA	4
7	8	XBOZZ	6105-00- 177-2458	02-009089-000	64731	<b>TERMINAL BOX</b>	EA	1
7	9	PAFZZ	4130-00-106-1971	01-008773-020	64731	<b>OVERLOAD, PROTECTOR</b>	EA	1
7	10	XAFZZ		02-010389-001	64731	<b>FRAME : WITH WOUND STATOR</b>	EA	1

Figure 7. Motor assembly.





ME 4120-336-24P/8

(1) ILLUSTRATION		(2)	(3)	(4)	(5)	(6) DESCRIPTION	(7)	(8)
(a) FIG NO.	(b) ITEM NO.	SMR CODE	NATIONAL STOCK NUMBER	PART NUMBER	FSCM	USABLE ON CODE	U/M	QTY INC IN UNIT
GROUP 07 - HEATER ASSEMBLY								
8	1	PAOZZ	5305-00-163-8349	12-11-613-11	94222	SCREW, PANEL FASTENER: CLAMP MTC	EA	6
8	2	XBOZZ	5340-01-039-0103	13214E3416	97403	CLAMP : HEATER RETAINER	EA	6
8	3	PAOZZ	5310-00-880-9344	12-11014-12	94222	WASHER, RETAINING: CLAMP MTC	EA	6
8	4	PAOZZ	4540-00-110-3729	13214E3561	97403	ELEMENT, HEATING: ELECTRICAL	EA	6
8	5	PAOZZ	5310-00-877-5798	MS21044D3	96906	NUT, SELF-LOCKING: SUPPORT MTC, NO. 10-32 THD SIZE	EA	4
8	6	PAOZZ	5305-00-993-1848	MS35207-265	96906	SCREW, MACHINE: SUPPORT MTC, NO. 10-32 THD SIZE, 3/4 IN. LG	EA	4
8	7	PAOZZ	5330-00-119-7503	NAS1523C3F	80205	WASHER, PACKING: SUPPORT MOUNTING	EA	4
8	8	PAOZZ	5305-00-857-5867	MS9122-03	96906	SCREW, MACHINE: SUPPORT MTC, NO. 10-32 THD SIZE, 1/2 IN. LG	EA	2
8	9	PAOZZ	5310-00-821-2366	13214E3469	97403	WASHER: SUPPORT MTC	EA	2
8	10	XBOZZ		13214E3629-2	97403	SUPPORT, HEATER	EA	1

Figure 8. Heater assembly.

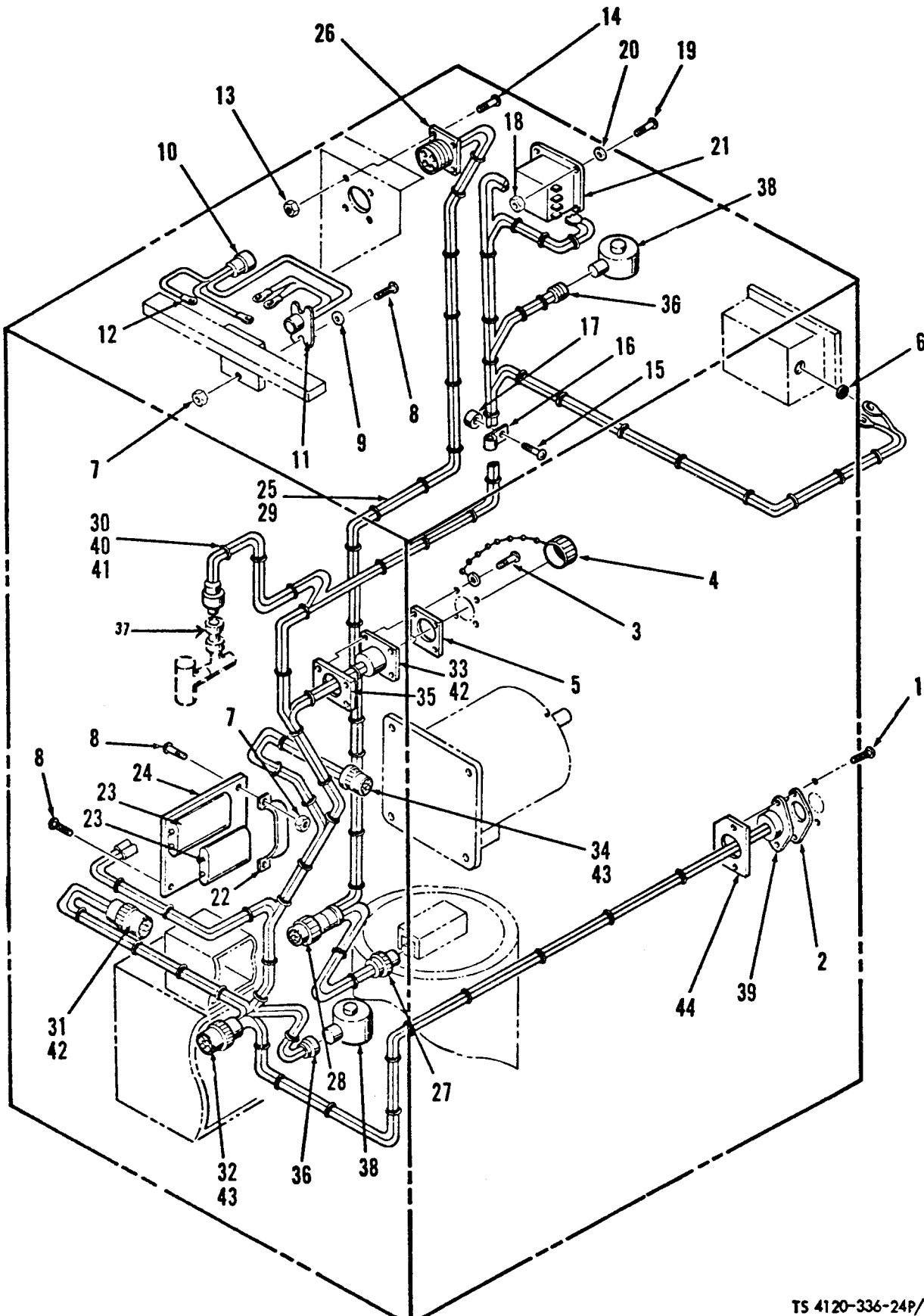
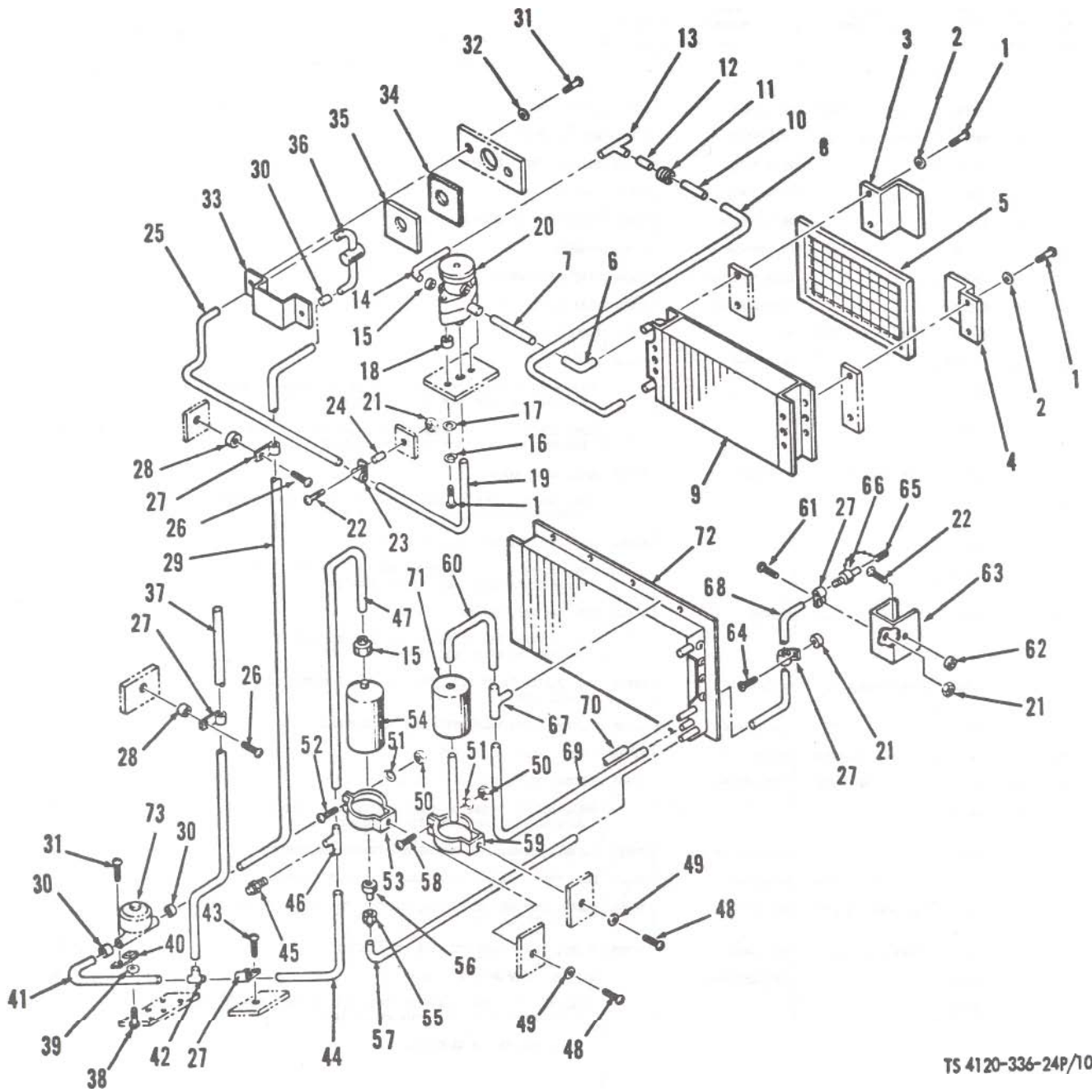


Figure 9. Wiring harness and clamps.

TM5-4120-336-24P										
(1)	(2)	(3)	(4)	(5)	(6)			(7)	(8)	
ILLUSTRATION										
(A)	(B)	NATIONAL			DESCRIPTION				QTY	
FIG	ITEM	STOCK	PART						INC	
NO	NO	CODE	NUMBER	NUMBER	FSCM		USABLE ON CODE	U/M	UNIT	
GROUP 08 - WIRING HARNESS AND CLAMPS										
9	1	PAOZZ	5305-00-984-6194	MS35206-246	96906	SCREW, MACHINE: THERMOSTAT MTG, NO. 8-32 THD SIZE, 5/8 IN. LG			EA	2
9	2	XBOZZ		13211E8273	97403	GASKET: THERMOSTAT MTG			EA	1
9	3	PAOZZ	5305-00-053-1114	MS24621-11	96906	SCREW, TAPPING: HARNESS MTG, NO. 4-24 THD SIZE, 1/2 IN. LG			EA	4
9	4	PAOZZ	5935-00-221-8620	MS25043-20D	96906	CAP, ELECTRICAL CONNECTOR			EA	1
9	5	XBOZZ		MS51007-7	96906	GASKET: HARNESS MTG			EA	1
9	6	XBOZZ		MS35490-6	96906	GROMMET: PRESSURE SWITCH ENCLOSURE			EA	1
9	7	PAOZZ	5310-00-060-2039	MS21044D08	96906	NUT, SELF-LOCKING: THERMOSTAT MTG, CAPACITOR STRAP MTG, NO. 8-32 THD SIZE			EA	4
9	8	PAOZZ	5305-00-984-6194	MS35206-246	96906	SCREW, MACHINE: THERMOSTAT MTG, CAPACITOR STRAP MTG, CAPACITOR BRACKET MTG, NO. 8-32 THD SIZE, 5/8 IN. LG			EA	8
9	9	PAOZZ	5310-00-809-8544	MS27183-7	96906	WASHER, FLAT: THERMOSTAT MTG			EA	2
9		MOOZZ			97403	WIRING HARNESS MANUFACTURE FROM NSN 6145-00-578-7517 AND P/N MILI23053-2CL1 (81349)			EA	1
9	10	PAOZZ	5935-00-081-1233	MS3100R16-10P	96906	CONNECTOR			EA	1
9	11	PAOZZ	4130-00-106-1972	MWA1256	82647	THERMOSTAT			EA	1
9	12	PAOZZ	5940-00-143-4780	MS25036-108	96906	TERMINAL LUG			EA	4
9	13	PAOZZ	5310-00-088-0551	MS21044N04	96906	NUT, SELF-LOCKING: HARNESS MTG, NO. 4-40 THD SIZE			EA	4
9	14	PAOZZ	5305-00-984-4976	MS35206-219	96906	SCREW, MACHINE: HARNESS MTG, NO. 4-40 THD SIZE, 3/4 IN. LG			EA	4
9	15	PAOZZ	5305-00-995-3442	MS35207-268	96906	SCREW, MACHINE: CLAMP MTG, NO. 10-32 THD SIZE, 1 1/4 IN. LG			EA	2
9	16	XBOZZ		MS21104DB	96906	CLAMP, LOOP: HARNESS MTG, 1/3 IN. NOMINAL SIZE			EA	2
9	17	XBOZZ		13211E8376-1	97403	SPACER: CLAMP MTG, 1/2 IN. LG			EA	2
9	18	PAOZZ	5310-00-081-8087	MS21044N06	96906	NUT, SELF-LOCKING: RELAY MTG, NO. 6-32 THD SIZE			EA	2
9	19	PAOZZ	5305-00-984-6222	MS35206-235	96906	SCREW, MACHINE: RELAY MTG, NO. 6-32 THD SIZE, 1 1/4 IN. LG			EA	2
9	20	PAOZZ	5310-00-082-1404	MS27183-6	96906	WASHER, FLAT: RELAY MTG			EA	2
9	21	PAOZZ	5945-00-106-7100	MTS004	04009	RELAY: FAN SPEED CONTROL	CVC		EA	1
9	21	PAOZZ	5945-00-430-6933	PM4030	77342	RELAY	CUS		EA	1
9	22	XBOZZ		13214E3531	97403	STRAP, RETAINING: CAPACITOR MTG			EA	1
9	23	PAOZZ	5910-00-927-2738	520600	97899	CAPACITOR: FAN MOTOR, COMPRESSOR	CVC		EA	2
9	23	PAOZZ	5910-00-007-7724	KBL37P206Q	93799	CAPACITOR, FIXED PAPER DIELECTRIC	CUS		EA	1
9	24	XBOZZ		13214E3527	97403	BRACKET, MOUNTING: CAPACITOR			EA	1
9	25	MDOZZ			97403	WIRING HARNESS MANUFACTURE FROM P/N MILT43435SIZE3TYPE1FINISHB (81349) AND NSN 6145-00-578-7516, 6145-00-578-7517			EA	1
9	26	PAOZZ	5935-00-879-0235	MS3106R28-9P	96906	CONNECTOR			EA	1
9	27	PAOZZ	5935-00-800-9858	MS3106R16S1S	96906	CONNECTOR			EA	1
9	28	PAOZZ	5935-00-755-3493	MS3106R16-10S	96906	CONNECTOR			EA	1

(1) ILLUSTRATION (A) FIG NO	(2) (B) ITEM NO	(3) SMR CODE	(4) NATIONAL STOCK NUMBER	(5) PART NUMBER	(6) DESCRIPTION	(7) USABLE ON CODE	(8) QTY INC IN UNIT
9	29	PAOZZ	5999-00-914-2318	13216E6191-2	97403 TERMINAL LUG	CVC	EA 4
9	30	MOOOO			97403 WIRING HARNESS MANUFACTURE FROM P/N MILI12053-2CL1 (81349), MILT43435SIZE1FINISHB (81349) AND NSN 6145-00-578-7517, 6145-00-578-7521	CVC	EA 1
9	30	XBOZZ		13220E6703	97403 WIRING HARNESS	CUS	EA 1
9	31	PAOZZ	5935-00-851-9080	MS3106R32-75	96906 CONNECTOR		EA 1
9	32	PAOZZ	5935-00-835-1913	MS3100R28-17S	96906 CONNECTOR		EA 1
9	33	PAOZZ	5935-00-318-1819	MS3100R20-4PX	96906 CONNECTOR		EA 1
9	34	PAOZZ	5935-00-721-0488	MS3106R14S6S	96906 CONNECTOR		EA 1
9	35	PAOZZ	4130-00-991-8260	C6974-20-41	78553 RETAINER RING		EA 1
9	36	PAOZZ	5975-00-937-3680	DB92100	49367 CABLE GRIP	CVC	EA 2
9	17	PAOZZ	5930-00-396-2244	6PS306N405N285L	82647 SWITCH, PRESSURE		EA 1
9	38	PAOZZ	4810-00-109-3830	0158	93781 VALVE, SOLENOID		EA 2
9	39	PAOZZ		416-25	93410 THERMOSTAT	CVC	EA 1
9	19	PAOZZ		NTP25	93410 THERMOSTAT	CUS	EA 1
9	40	PAOZZ	5940-00-143-4774	MS25036-153	96906 TERMINAL LUG	CVC	EA 1
9	41	PAOZZ		13216E9515	97403 TERMINAL, WIRE	CVC	EA 10
9	42	PAOZZ	5935-00-565-9503	MS25251-12	96906 PLUG, END SEAL		EA 5
9	43	PAOZZ	5340-00-823-5322	MS25251-16	96906 PLUG, END SEAL		EA 6
9	44	PAOZZ		R655-7C105	97450 PLATE, MOUNTING, THERMOSTAT	CVC	EA 1
9	44	XBOZZ		13230E5672	97403 PLATE, MOUNTING THERMOSTAT	CUS	EA 1

(1) LLUS (a) FIG NO	(2) NON (b) TEM NO.	(3) SMR CODE	(4) NATIONAL STOCK NUMBER	(5) PART NUMBER	(6) DESCRIPTION  USABLE ON CODE	(7) U/M	(8) QTY INC IN UNIT
<b>GROUP 09 - REFRIGERATION PIPING</b>							
10	1	PAOZZ	5305-00-857-5867	MS9122-03	96906 SCREW, MACHINE: COIL MTC, NO. 10-32 THD SIZE. 1/2 IN. LG	EA	4
10	2	PAOZZ	5310-00-821-2366	13214E3469	97403 WASHER, FLAT: COIL MTC	EA	4
10	3	XBOZZ		R655-71C137	97450 BRACKET: MIST ELIMINATOR MTC	c v c EA	1
10	3	XBOZZ		13220E5415	97403 BRACKET	CUS EA	1
10	4	XBOZZ		R655-71C138	97450 BRACKET: MIST ELIMINATOR MTC	CVC EA	1
10	4	XBOZZ		13220E5414	97403 BRACKET	CUS EA	1
10	5	XBOZZ		R655-71C140-1	37450 MST ELIMINATOR	cvc EA	1
10	5	PBOZZ		13220E5413-1	97403 MIST ELIMINATOR	CUS EA	1
10	6	PBFZZ	4730-00-277-7922	Y2312	41947 ELBOW: 3/8 IN.	cvc EA	1
10	6	PAOZZ		MS35298-3	96906 ELBOW	CUS EA	1
10	7	MFFZZ			TUBE, COPPER: VALVE TO ELBOW, 3/8 IN. OD, .032 IN. WALL MANUFACTURE FROM NSN 4710-00-203-3172	c v c EA	1
10	8	KFFZZ			TUBE, COPPER: COIL TO BULB CRADLE, 3/8 IN. OD, .032 IN. WALL MANUFACTURE FROM NSN 4710-00-203-3172	CVC EA	1
10	9	PBFZZ	4130-00-106-1975	13214E3554	97403 COIL, EVAPORATOR	EA	1
10	10	MFFZZ			TUBE, COPPER: BULB TO CRADLE, 5/8 IN. OD, .035 IN. WALL MANUFACTURE FROM NSN 4710-00-277-5530	cvc EA	1
10	11	PAOZZ		PT1	87698 TAPE, INSULATION: VALVE BULB SEAL	RI	V
10	12	MOOZZ			TUBE, COPPER: BULB CRADLE TO TEE, 3/8 IN. OD, .032 IN. WALL MANUFACTURE FROM NSN 4710-00-203-3172	EL	1
10	13	PBOZZ	4730-00-815-5664	W40330	41947 TEE: 3/8 IN., 1/4 IN., 3/8 IN.	EA	1
10	14	MOOZZ			TUBE, COPPER: TEE TO VALVE, 1/4 IN. OD, .030 IN. WALL MANUFACTURE FROM NSN 4710-00-203-3171	EA	1
10	15	PBFZZ	730-00-189-2737	MS35872-2	96906 NUT, FLARE: VALVE EQUALIZER LINE, DEHYDRATOR, 1/4 IN. FLARE SIZE	EL	2
10	16	PAOZZ		MS35338-46	96906 WASHER, LOCK: VALVE MTC, 3/8 IN. NOMINAL	EL	1
10	17	PAOZZ	5310-00-080-6004	MS27183-14	96906 WASHER, FLAT: VALVE MTC	EL	2
10	18	XBOZZ	5365-01-040-1488	13211E8376-3	97403 SPACER: VALVE MTC, 7/16 IN. LG	EL	2
10	19	MOOZZ			TUBE, COPPER: VALVE TO TUBE, 3/8 IN. OD, .032 IN. WALL MANUFACTURE FROM NSN 4710-00-203-3172	EL	1
10	20	PAFZZ		TCLE50HW120-10A	70255 VALVE, THERMOSTATIC EXPANSION: EVAPORATOR CONTROL	EL	1
10	21	PAOZZ	5310-00-877-5798	MS21044D3	96906 NUT, SELF-LOCKING: CLAMP MTC, NO. 10-32 THD SIZE	EL	3
10	22	PAOZZ	5305-00-958-0585	MS35207-272	96906 SCREW, MACHINE: CLAMP MTC, BRACKET MTC, NO. 10-32 TRD SIZE. 2 1/4 IN. LG	EL	1
10	23	PAOZZ	340-00-105-8328	MS21104D6	96906 CLAMP, LOOP: LINE MTC, 3/8 IN. NOMINAL	EA	1
10	24	XBOZZ		13211E8376-2	97403 SPACER: CLAMP MTC, 1 5/16 IN. LG	EA	1
10	25	MOOZZ			TUBE, COPPER: SIGRT GLASS TO TUBE, 3/8 IN. OD, .032 IN. WALL MANUFACTURE FROM NSN 4710-00-203-3172	EA	1
10		PAOZZ	4710-00-203-3172		TUBE, COPPER (AS REQUIRED)	c v c FT	V



TS 4120-336-24P/10

Figure 10. Mist eliminator, evaporator and condenser coils, dehydrator, receiver, sight glass and piping.

TM5-4120-336-24P										
(1)	(2)	(3)	(4)	(5)	(6)			(7)	(8)	
ILLUSTRATION										
(A)	(B)		NATIONAL			DESCRIPTION			QTY	
FIG	ITEM	SMR	STOCK	PART					INC	
NO	NO	CODE	NUMBER	NUMBER	FSCM		USABLE ON CODE	U/M	IN	
									UNIT	
10	26	PAOZZ	5305-00-995-3441	MS35207-269	96906	SCREW, MACHINE: CLAMP MTG, NO. 10-32 THD SIZE, 1 1/2 IN. LG			EA	2
10	27	PAOZZ	5340-00-106-0549	MS21104D4	96906	CLAMP, LOOP: 1/4 IN. NOMINAL			EA	4
10	28	XBOZZ		13214E3372-2	97403	SPACER: CLAMP MTG, 7/8 IN. LG			EA	2
10	29	MOOZZ				TUBE, COPPER: VALVE TO SIGHT GLASS, 1/4 IN. OD, .030 IN. WALL MANUFACTURE FROM NSN 4710-00-203-3171			EA	1
10	30	XBZZ	4730-00-822-1274	W1706	41947	BUSHING, FLUSH: 3/8 IN. OD, 1/4 IN. ID SIGHT GLASS FITTING			EA	3
10	31	PAOZZ	5305-00-984-6194	MS35206-246	96906	SCREW, MACHINE: BRACKET MTG, NO. 8-32 THD SIZE, 5/8 IN. LG			EA	4
10	32	PAOZZ	5310-00-809-8544	MS27183-7	96906	WASHER, FLAT: BRACKET MTG			EA	2
10	33	XBOZZ		13214E3419	97403	BRACKET: SIGHT GLASS MTG			EA	1
10	34	XBOZZ	5330-00-409-3350	13211E8255	97403	GASKET: SIGHT GLASS MTG			EA	1
10	35	XBOZZ		13211E8242	97403	SPACER: SIGHT GLASS MTG			EA	1
10	36	PAFZZ	4130-00-073-8404	SAK13	78462	GLASS, SIGHT			EA	1
10	37	MDOZZ				TUBE, COPPER: TEE TO TUBE, 1/4 IN. OD, .030 IN. WALL MANUFACTURE FROM NSN 4710-00-203-3171			EA	1
10	38	PAOZZ	5305-00-984-6193	MS35206-245	96906	SCREW, MACHINE: VALVE MTG, NO. 8-32 THD SIZE, 1/2 IN. LG			EA	2
10	39	PAOZZ	5310-00-045-3299	MS35338-42	96906	WASHER, LOCK: VALVE MTG, NO. 8 NOMINAL			EA	2
10	40	XBOZZ		13214E3592-2	97403	BRACKET: VALVE MTG			EA	1
10	41	MOOZZ				TUBE, COPPER: TEE TO VALVE, 1/4 IN. OD, .030 IN. WALL MANUFACTURE FROM NSN 4710-00-203-3171			EA	1
10	42	PBFZZ	4730-00-257-2163	MS35929-2	96906	TEE: 1/4 IN., 1/4 IN., 1/4 IN.			EA	1
10	43	PAOZZ	5305-00-989-7435	MS35207-264	96906	SCREW, MACHINE: CLAMP MTG, NO. 10-32 THD SIZE, 5/8 IN. LG			EA	1
10	44	MDOZZ				TUBE, COPPER: TEE TO TEE, 1/4 IN. OD, .030 IN. WALL MANUFACTURE FROM NSN 4710-00-203-3171			EA	1
10	45	PBFZZ	4130-00-073-8405	13211E8369	97403	VALVE, PRESSURE RELIEF			EA	1
10	46	PBFZZ	4730-00-278-8908	W4208	41947	TEE: 1/4 IN., 1/4 IN., 1/4-18 IN. NPTF			EA	1
10	47	MDOZZ				TUBE, COPPER: TEE TO DEHYDRATOR, 1/4 IN. OD, .030 IN. WALL MANUFACTURE FROM NSN 4710-00-203-3171			EA	1
10	48	PAOZZ	5305-00-993-2738	MS35207-280	96906	SCREW, MACHINE: BRACKET MTG, 1/4-28 THD SIZE, 5/8 IN. LG			EA	3
10	49	PAOZZ	5310-00-582-5965	MS35338-44	96906	WASHER, LOCK: BRACKET MTG, 1/4 IN. NOMINAL			EA	3
10	50	PAOZZ	5310-00-043-0520	MS35650-3252	96906	NUT, HEXAGON: DEHYDRATOR MTG, RECEIVER MTG, 1/4-20 THD SIZE			EA	3
10	51	PAOZZ	5310-00-582-5965	MS35338-44	96906	WASHER, LOCK: DEHYDRATOR MTG, RECEIVER MTG, 1/4 IN. NOMINAL SIZE			EA	3
10	52	PAOZZ	5305-00-088-8923	MS35207-285	96906	SCREW, MACHINE: DEHYDRATOR MTG, 1/4-28 THD SIZE, 1 1/2 IN. LG			EA	1
10	53	XBOZZ		R655-71C122-1	97450	BRACKET ASSEMBLY: DEHYDRATOR MTG		CVC	EA	1
10	53	XBOZZ		13211E8406-1	97403	BRACKET ASSEMBLY		CUS	EA	1
10	54	PAFZZ		ADK052	70255	DEHYDRATOR, DESICCANT, REFRIGERANT, 1/4 IN. SAE FLARE CONNECTOR			EA	1
10	55	PBFZZ	4730-00-189-2739	MS35872-3	96906	NUT, FLARE: DEHYDRATOR, 3/8 IN. FLARE			EA	1
10	56	XBZZ		AS041	41947	REDUCER, TUBE: 1/4 IN. FLARE, 3/8 IN. FLARE			EA	1
10	57	MOOZZ				TUBE, COPPER: COIL TO DEHYDRATOR, 3/8 IN. OD, .032 IN. WALL MANUFACTURE FROM NSN 4710-00-203-3172			EA	1

(1) ILLUSTRATION (A) FIG NO	(2) (B) ITEM NO	(3) SMR CODE	(4) NATIONAL STOCK NUMBER	(5) PART NUMBER	(6) FSCM	DESCRIPTION	USABLE ON CODE	(7) U/M	(8) QTY INC IN UNIT
10	58	PAOZZ	5305-00-958-0588	MS35207-287	96906	SCREW, MACHINE: RECEIVER MTG, 1/4-28 THD SIZE, 2 IN. LG		EA	2
10	59	XBOZZ		R655-71C122-2	97450	BRACKET ASSEMBLY: RECEIVER MTG	CVC	EA	2
10	59	XBOZZ		13211E8406-2	97403	BRACKET ASSEMBLY	CUS	EA	2
10	60	MDOZZ				TUBE, COPPER: TEE TO RECEIVER, 3/8 IN. OD, .032 IN. WALL MANUFACTURE FROM NSN 4710-00-203-3172		EA	1
10	61	PAOZZ	5305-00-989-7435	MS35207-264	96906	SCREW, MACHINE: CLAMP MTG, NO. 10-32 THD SIZE, 5/8 IN. LG		EA	1
10	62	XBOZZ		13211E8376-1	97403	SPACER, BRACKET MTG	CVC	EA	1
10	63	XBOZZ		R655-71C106	97450	BRACKET: CLAMP MTG	CVC	EA	1
10	64	PAOZZ	5305-00-995-3442	MS35207-268	96906	SCREW, MACHINE: CLAMP MTG, NO. 10-32 THD SIZE, 1 1/4 IN. LG	CVC	EA	1
10	65	XBFZZ	4820-00-936-2235	VUS3-46AC	07295	VALVE, CHARGING: DISCHARGE LINE, 1/4 IN. ID, 3/8 IN. OD WITH CAP	CVC	EA	1
10	65	PAFZZ		13218E6975	97403	VALVE, CHARGING	CUS	EA	2
10	66	XBOZZ		13219E9540	97403	CAP AND CHAIN	CUS	EA	1
10	67	PBFZZ	4730-00-079-0267	W40324	41947	TEE: 3/8 IN., 1/4 IN.		EA	1
10	68	MDOZZ				TUBE, COPPER: VALVE TO TEE, 1/4 IN. OD, .030 IN. WALL MANUFACTURE FROM NSN 4710-00-203-3171		EA	1
10	69	MDOZZ				TUBE, COPPER: TEE TO COIL, 3/8 IN. OD, .032 IN. WALL MANUFACTURE FROM NSN 4710-00-203-3172		EA	1
10	70	MDOZZ				TUBE, COPPER: RECEIVER TO COIL, 3/8 IN. OD, .032 IN. WALL MANUFACTURE FROM 4710-00-203-3172	CVC	EA	1
10	71	XBFZZ		13214E3798-1	97403	RECEIVER		EA	1
10	72	PBFZZ	4130-00-106-1976	13214E3553	97403	CONDENSER COIL		EA	1
10	73	PAFZZ	4810-00-109-3830	0158	93781	VALVE, SOLENOID: LIQUID LINE	CVC	EA	1



(1) ILLUSTRATION (A) FIG NO	(2) ITEM (B) NO	(3) SMR CODE	(4) NATIONAL STOCK NUMBER	(5) PART NUMBER	(6) FSCM	DESCRIPTION	USABLE ON CODE	(7) U/M	(8) QTY INC IN UNIT
GROUP 10 - VALVES, PRESSURE SWITCHES AND PIPING									
11	1	XBFZZ		VU3-46AC	07295	VALVE, CHARGING: SUCTION LINE, 1/4 IN. ID, 3/8 IN. OD	CVC	EA	1
11	1	PAFZZ		13218E6975	97403	VALVE CHARGING	CUS	EA	1
11	2	XBOZZ		13219E9540	97403	CAP AND CHAIN	CUS	EA	1
11	3	PAOZZ	5340-00-106-0599	MS21104D4	96906	CLAMP, LOOP: 1/4 IN. NOMINAL SIZE	CVC	EA	2
11	4	MDOZZ				TUBE, COPPER: TEE TO CHARGING VALVE, 1/4 IN. OD, .030 IN. WALL MANUFACTURE FROM NSN 4710-00-203-3171		EA	1
11	5	MDOZZ				TUBE, COPPER: TUBE TO VALVE, 1/4 IN. OD, .030 IN. WALL MANUFACTURE FROM NSN 4710-00-203-3171		EA	1
11	7	XBFZZ	4730-00-822-1274	W1706	41947	BUSHING, FLUSH: 3/8 IN. OD, 1/4 IN. ID		EA	1
11	8	XBOZZ	5325-00-263-6632	MS35490-6	96906	GROMMET, SPLIT: 1/4 IN. ID		EA	1
11	9	XBOZZ		MILT22085TYPE1	81349	TAPE, ADHESIVE: INSULATION RETAINING, 1 IN. WIDE (AS REQUIRED)		EA	V
11	10	XBOZZ		MILP15280FORMT	81349	FOAM, PLASTIC: TUBING INSULATION, 1/2 IN. ID, 1/2 IN. WALL		EA	V
11	11	XBOZZ	5325-00-286-6047	MS35490-1	96906	GROMMET, SPLIT: 1/8 IN. ID		EA	1
11	12	PAOZZ	5305-00-995-3441	MS35207-269	96906	SCREW, MACHINE		EA	1
11	13	PAOZZ		MS35338-46	96906	WASHER, LOCK: VALVE MTG, 3/8 IN. NOMINAL SIZE		EA	2
11	14	PAOZZ	5310-00-080-6004	MS27183-14	96906	WASHER, FLAT: VALVE MTG		EA	2
11	15	XBOZZ	5365-01-040-1488	13211E8376-3	97403	SPACER, VALVE MTG		EA	2
11	16	PAFZZ	4820-00-107-0992	TCL25CL15A	70255	VALVE, THERMOSTATIC EXPANSION: LIQUID QUENCH		EA	1
11	17	PAOZZ	5310-00-877-5798	MS21044D3	96906	NUT, SELF-LOCKING: CLAMP MTG, NO. 10-32 THD SIZE		EA	4
11	18	PAOZZ	5305-00-995-3442	MS35207-268	96906	SCREW, MACHINE: CLAMP MTG, NO. 10-32 THD SIZE, 1 1/4 IN. LG		EA	4
11	19	XBOZZ		13214E3372-1	97403	SPACER: CLAMP MTG		EA	1
11	20	PAOZZ	5340-00-105-8328	MS21104D6	96906	CLAMP, LOOP: 3/8 IN. NOMINAL SIZE		EA	4
11	21	PAOZZ		MILT22085TYPE1	81349	TAPE, ADHESIVE: INSULATION RETAINING, 1 IN. WIDE (AS REQUIRED)		RL	V
11	22	PAOZZ		MILP15280FORMT	81349	FOAM, PLASTIC: TUBING INSULATION, 3/8 IN. ID, 1/2 IN. WALL (AS REQUIRED)		FT	V
11	23	MDOZZ				TUBE, COPPER: TUBE TO TEE, 1/4 IN. OD, .030 IN. WALL MANUFACTURE FROM NSN 4710-00-203-3171		EA	1
11	24	XBOZZ		MS35490-12	96906	GROMMET, SPLIT: 3/8 IN. ID		EA	1
11	25	MDOZZ				TUBE, COPPER: TUBE TO TEE, 1/4 IN. OD, .030 IN. WALL MANUFACTURE FROM NSN 4710-00-203-3171		EA	1
11	26	PBFZZ	4730-00-815-5664	W40330	41947	TEE: 3/8 IN., 1/4 IN., 3/8 IN.		EA	2
11	27	MDOZZ				TUBE, COPPER: TEE TO TEE, 3/8 IN. OD, .032 IN. WALL MANUFACTURE FROM NSN 4710-00-203-3172		EA	1
11	28	MDOZZ				TUBE, COPPER: TEE TO CONDENSER, 3/8 IN. OD, .032 IN. WALL MANUFACTURE FROM NSN 4710-00-203-3172		EA	1
11	29	MDOZZ				TUBE, COPPER: TUBE TO TEE, 3/8 IN. OD, .032 IN. WALL MANUFACTURE FROM NSN 4710-00-203-3172		EA	1
11	30	MDOZZ				TUBE, COPPER: COMPRESSOR TO TUBE, 3/8 IN. OD, .032 IN. WALL MANUFACTURE FROM NSN 4710-00-203-3172		EA	1
11	31	PBFZZ	4730-00-263-6460	MS35929-3	96906	TEE: 3/8 IN., 3/8 IN., 3/8 IN.		EA	2
11	32	PAOZZ	5305-00-995-3441	MS35207-269	96906	SCREW, MACHINE: CLAMP MTG, NO. 10-32 THD SIZE, 1 1/2 IN. LG		EA	2
11	33	XBOZZ		13214E3372-2	97403	SPACER: CLAMP MTG, 7/8 IN. LG		EA	2

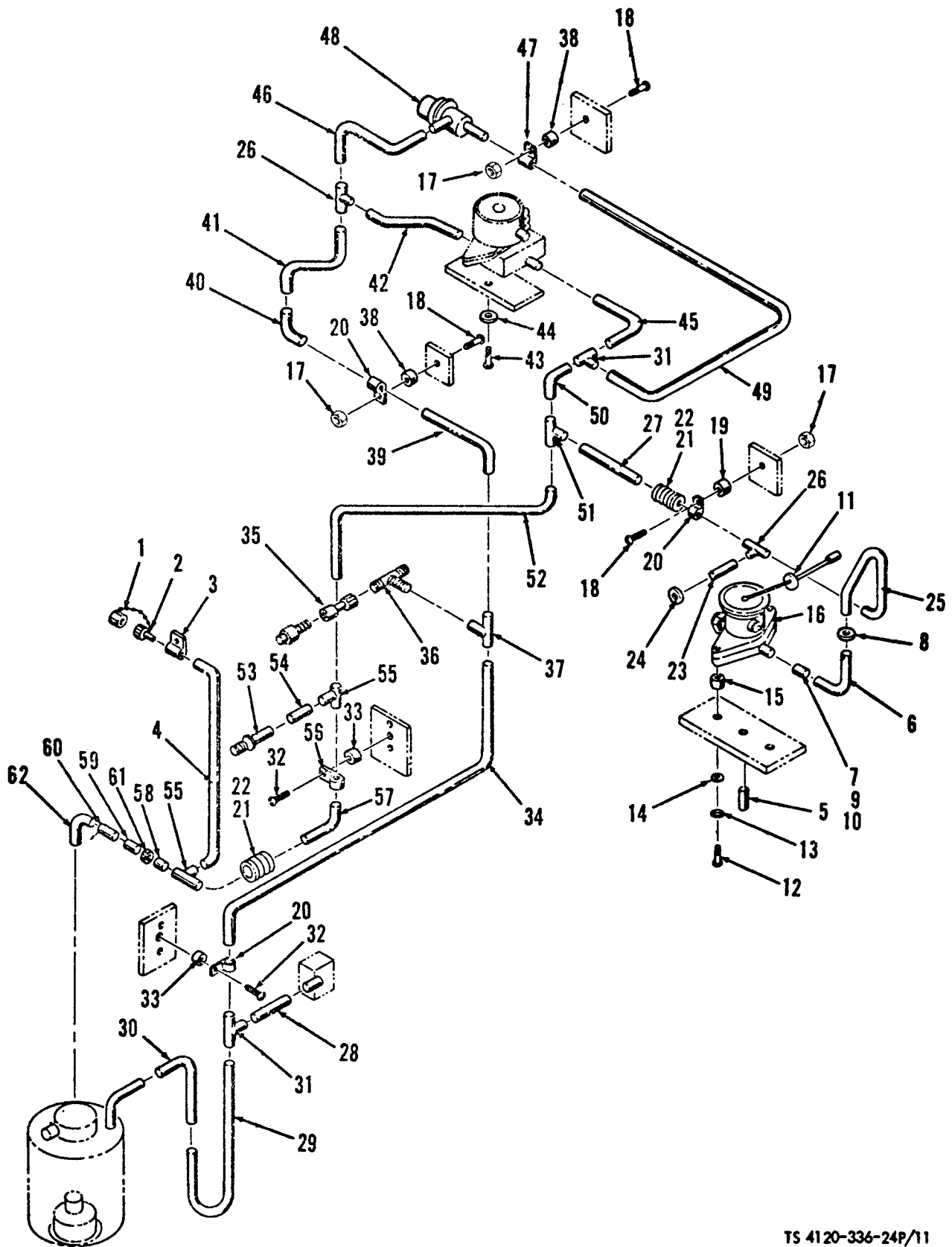
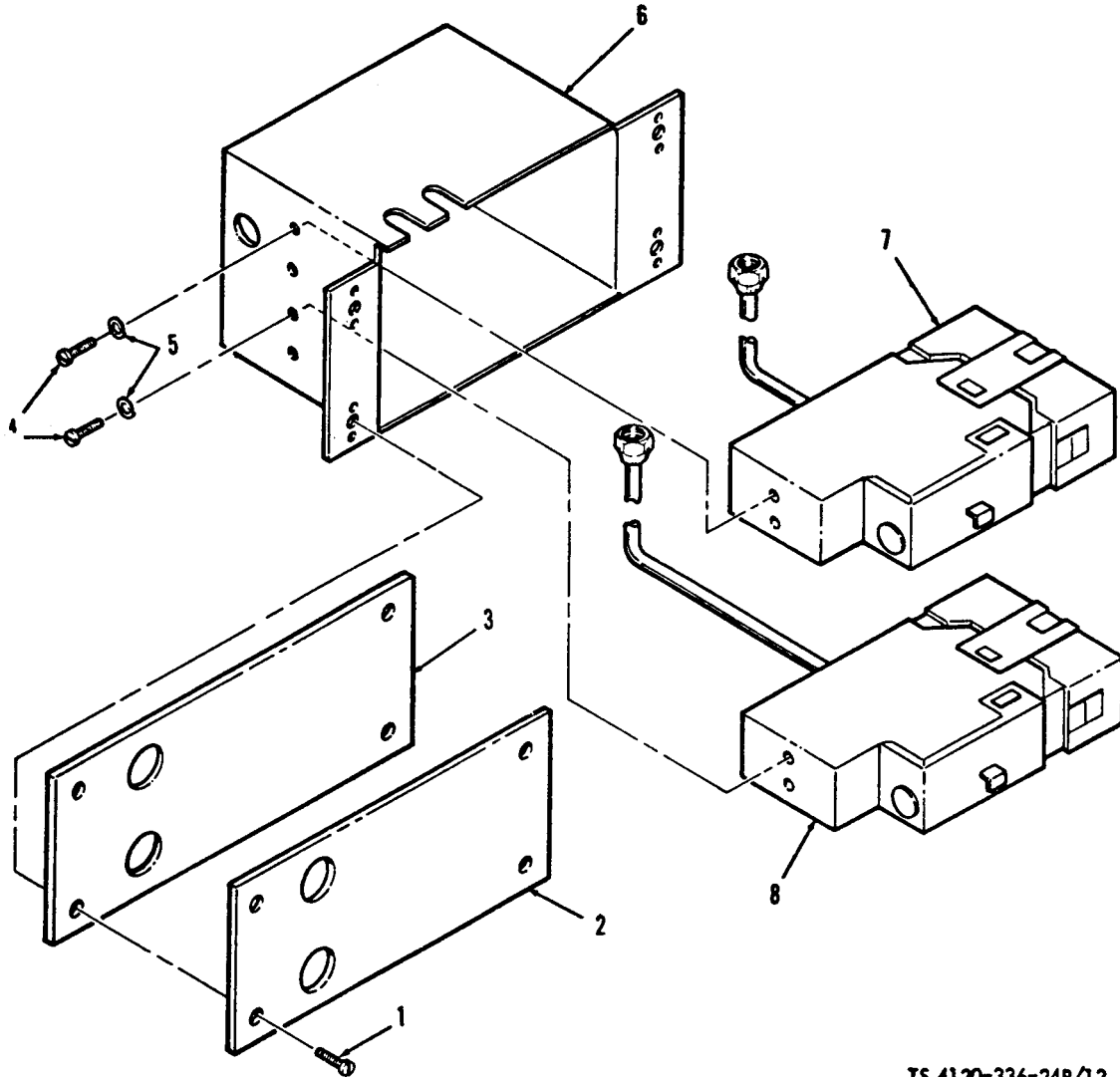


Figure 11. Valves, pressure switches and piping.

TS 4120-336-24P/11

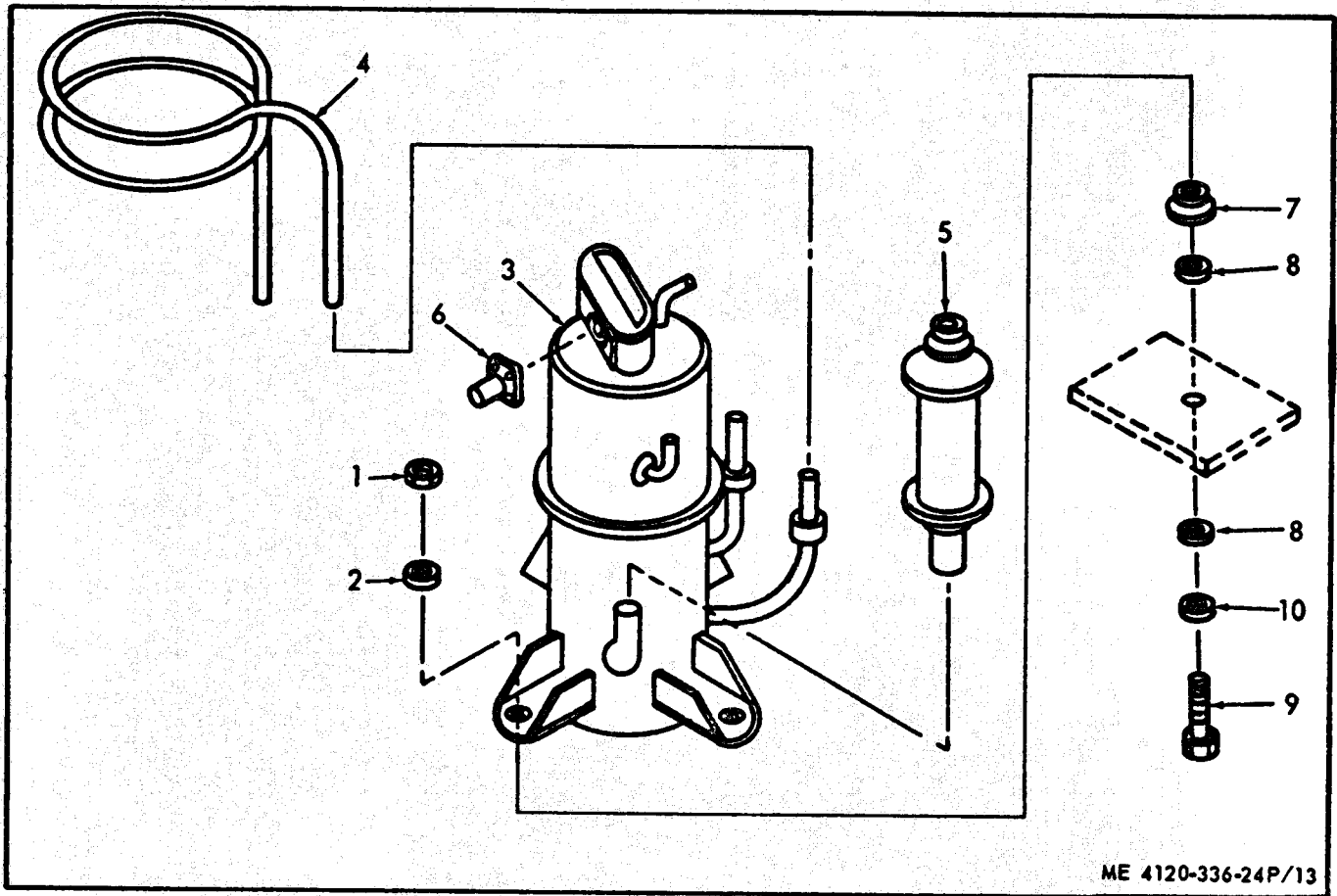
TM5-4120-336-24P										
(1)	(2)	(3)	(4)	(5)	(6)			(7)	(8)	
ILLUSTRATION										
(A)	(B)	NATIONAL		DESCRIPTION					QTY	
FIG	ITEM	SMR	STOCK	PART					INC	
NO	NO	CODE	NUMBER	NUMBER	FSCM		USABLE ON CODE	U/M	IN	
									UNIT	
11	34	MDOZZ				TUBE, COPPER: TEE TO TEE, 3/8 IN. OD, .032 IN. WALL MANUFACTURE FROM NSN 4710-00-203-3172			EA	1
11	35	PBFZZ		A13563	41947	UNION, FLARE SWIVEL: PRESSURE SWITCH CONNECTION, 1/4 IN. TUBE 7/16-20 UNF THD SIZE	CVC		EA	1
11	35	PAFZZ		SAEJ513	81343	UNION, FLARE SWIVEL	CUS		EA	1
11	36	PBFZZ		A127	41947	TEE: PRESSURE SWITCH CONNECTION, 7/16-20 THD SIZE, 1/8 IN. NPTF EXTERNAL, 7/16-20 THD SIZE, 1/4 IN. TUBE	CVC		EA	1
11	37	PBFZZ		W4230	41947	TEE: 3/8 IN., 1/8-27 IN. NPTF			EA	1
11	38	XBOZZ		13211E8376-1	97403	SPACER: CLAMP MTG, 1/2 IN. LG			EA	3
11	39	MDOZZ				TUBE, COPPER: TEE TO ELBOW, 3/8 IN. OD, .032 IN. WALL MANUFACTURE FROM NSN 4710-00-203-3172			EA	1
11	40	PBFZZ	4730-00-818-5201	W2009	41947	ELBOW: 3/8 IN.	CVC		EA	1
11	40	PAFZZ		MS35917-3	96906	ELBOW	CUS		EA	1
11	41	MDOZZ				TUBE, COPPER: ELBOW TO TEE, 3/8 IN. OD, .032 IN. WALL MANUFACTURE FROM NSN 4710-00-203-3172			EA	1
11	42	MDOZZ				TUBE, COPPER: TEE TO VALVE, 3/8 IN. OD, .032 IN. WALL MANUFACTURE FROM NSN 4710-00-203-3172			EA	1
11	43	PAOZZ	5305-00-984-6193	MS35206-245	96906	SCREW, MACHINE: VALVE MTG, NO. 8-32 THD SIZE, 1/2 IN. LG			EA	2
11	44	PAOZZ	5310-00-045-3299	MS35338-42	96906	WASHER, LOCK: VALVE MTG, NO. 8 NOMINAL SIZE			EA	2
11	45	MDOZZ				TUBE, COPPER: VALVE TO TEE, 3/8 IN. OD, .032 IN. WALL MANUFACTURE FROM NSN 4710-00-203-3172			EA	1
11	46	MDOZZ				TUBE, COPPER: REGULATOR TO TEE, 1/4 IN. OD, .030 IN. WALL MANUFACTURE FROM NSN 4710-00-203-3171			EA	1
11	47	PBOZZ	5340-00-106-0551	MS21104D10	96906	CLAMP, LOOP: PRESSURE REGULATOR MTG, 5/8 IN. NOMINAL SIZE			EA	1
11	48	PAFZZ	4130-00-106-1973	MODEL104ADEVICE700	91494	VALVE, PRESSURE REGULATOR	CVC		EA	1
11	48	PAFZZ		70034-181	91494	VALVE, PRESSURE REGULATOR	CUS		EA	1
11	49	MDOZZ				TUBE, COPPER: TEE TO REGULATOR, 3/8 IN. OD, .032 IN. WALL MANUFACTURE FROM NSN 4710-00-203-3172			EA	1
11	50	MDOZZ				TUBE, COPPER: TEE TO TEE, 3/8 IN. OD, .032 IN. WALL MANUFACTURE FROM NSN 4710-00-203-3172			EA	1
11	51	PBFZZ	4730-00-950-5276	W4004	41947	TEE: 1/2 IN., 3/8 IN., 3/8 IN.			EA	1
11	52	MDOZZ				TUBE, COPPER: TEE TO TEE, 1/2 IN. OD, .032 IN. WALL MANUFACTURE FROM NSN 4710-00-059-5900			EA	1
11	53	PBFZZ		MS35919-2-2	96906	ADAPTER, PIPE TO TUBE: 1/4 IN., 1/4 IN. FLARE			EA	1
11	54	MDOZZ				TUBE, COPPER: TEE TO ADAPTER, 1/4 IN. OD, .030 IN. WALL MANUFACTURE FROM NSN 4710-00-203-3171			EA	1
11	55	PBFZZ	4730-00-821-9184	W40350	41947	TEE: 1/2 IN., 1/2 IN., 1/4 IN.			EA	2
11	56	PAOZZ	5340-00-106-0550	MS21104D8	96906	CLAMP, LOOP: 1/2 IN. NOMINAL SIZE			EA	1
11	57	MDOZZ				TUBE, COPPER: TEE TO TEE, 1/2 IN. OD, .032 IN. WALL MANUFACTURE FROM NSN 4710-00-059-5900			EA	1
11	58	MDOZZ				TUBE, COPPER: TEE TO CRADLE, 1/2 IN. OD, .032 IN. WALL MANUFACTURE FROM NSN 4710-00-059-5900			EA	1
11	59	MDOZZ				TUBE, COPPER: BULB CRADLE, 3/8 IN. OD, .035 IN. WALL MANUFACTURE FROM NSN 4710-00-554-8692			EA	1
11	60	MDOZZ				TUBE, COPPER: CRADLE TO ELBOW, 1/2 IN. OD, .032 IN. WALL MANUFACTURE FROM NSN 4710-00-059-5900			EA	1
11	61	PAOZZ		PT1	87698	TAPE, INSULATION			RL	V
11	62	PBFZZ	4730-00-022-1334	MS35928-4	96906	ELBOW: 1/2 IN.			EA	1



TS 4120-336-24P/12

(1) ILLUSTRATION (a) FIG NO.	(2) ITEM NO.	(3) SMR CODE	(4) NATIONAL STOCK NUMBER	(5) PART NUMBER	(6) FSCM	(7) DESCRIPTION	(8) QTY INC IN UNIT
GROUP 11 - HIGH AND LOW PRESSURE SWITCHES AND ENCLOSURE							
12	1	PAOZZ	5305 -00-9 84-4992	MS35206-232	96906	SCREW, MACHINE: ENCLOSURE MTG, NO. 6-32 THD SIZE, 3/4 IN. LG	EA 4
12	2	XBOZZ		13216E9520-2	97403	PLATE, INSTRUCTION: PRESSURE SWITCH	EA 1
12	3	XBOZZ		13216 E9519-2	97403	GASKET: PRESSURE SWITCH ENCLOSURE	EA 1
12	4	PAOZZ	5305-00-984-4984	MS35206-227	96906	SCREW, MACHINE: SWITCH MTG, NO. 6-32 THD SIZE, 5/16 IN. LG	EA 4
12	5	PAOZZ	5310-00-045-4007	MS35338-41	96906	WASHER, LOCK: SWITCH MTG, NO. 6 NOMINAL SIZE	EA 4
12	6	XBOZZ		13214 E3578-2	97403	ENCLOSURE : PRESSURE SWITCH	EA 1
12	7	PAOZZ	5930-00-275-7800	21 0AP40AN	92578	SWITCH, HIGH PRESSURE	EA 1
12	8	PAOZZ		21 0AP10AN	92578	SWITCH, LOW PRESSURE	EA 1

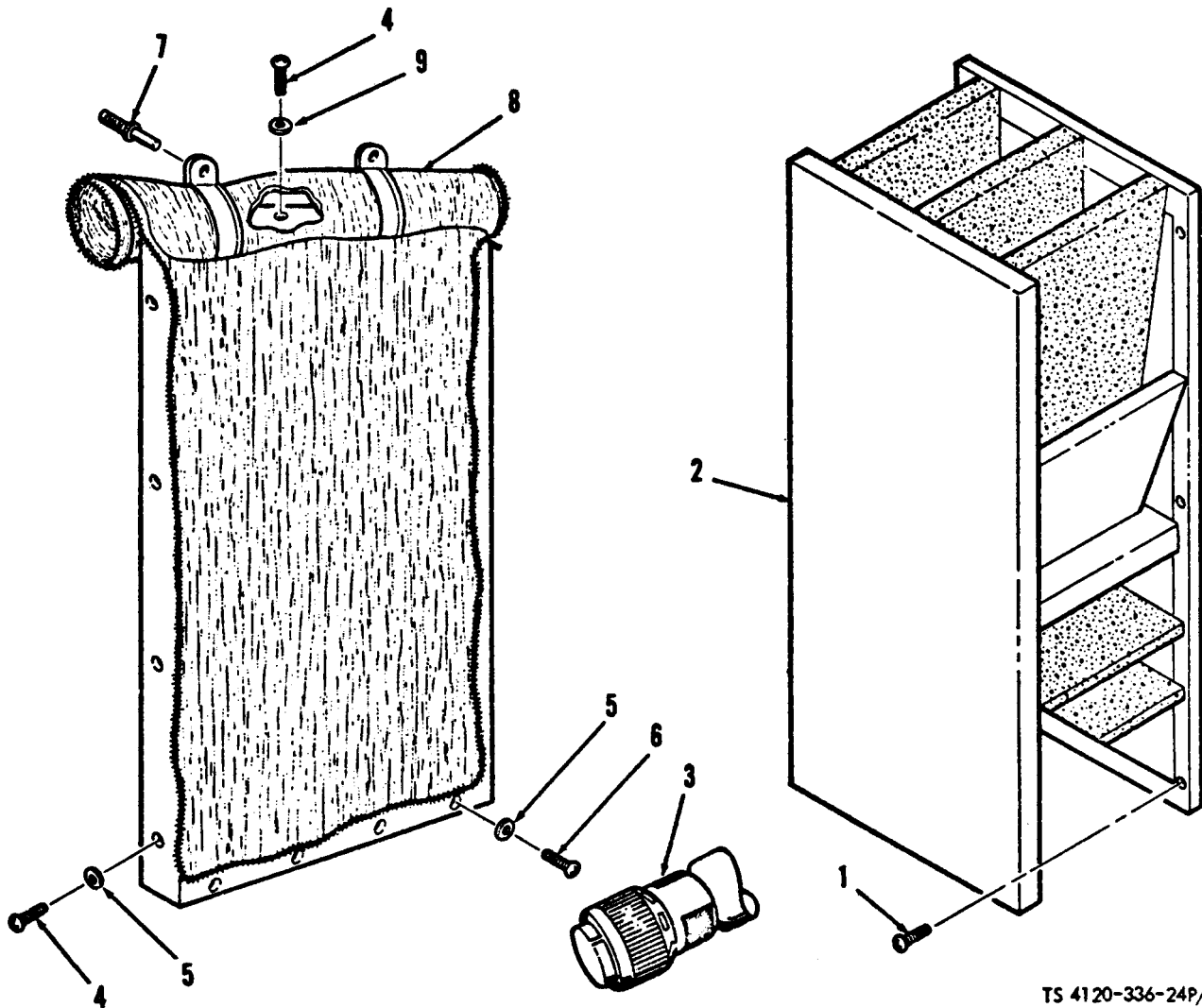
Figure 12. High and low pressure switches and enclosure.



ME 4120-336-24P/13

(1) ILLUSTRATION		(2)	(3)	(4)	(5)	(6)	(7)	(8)
(a) FIG NO.	(b) ITEM NO.	SMR CODE	NATIONAL STOCK NUMBER	PART NUMBER	FSCM	DESCRIPTION	U/I	QTY INC IN UNIT
							USABLE ON CODE	
<i>Group 12 - COMPRESSOR ASSEMBLY</i>								
13	1	PAOZZ	5310-00-814-0673	MS51943-33	96906	NUT, SELF-LOCKING: COMPRESSOR MTC, 5/16-18 THDSIZE	EA	4
13	2	PAOZZ	5310-00-167-0767	AW970-5	88044	WASHER, FLAT: COMPRESSOR MTC	EA	4
13	3	PAFZZ		MIL-J-6VBC-420	45236	COMPRESSOR ASSEMBLY	CUS	EA 1
13	3	PAFZZ	4130-00-110-9515	WHP622H6-115-1	01479	COMPRESSOR ASSEMBLY	CVC	EA 1
13	4	XBFZZ		475132	01479	PRECOOLER, COMPRESSOR	CVC	EA 1
13	4	PAOZZ		G2A53-120-50	79221	CRANKCASE, HEATER	CUS	EA 1
13	5	XBFZZ		475828	01479	STRAINER, SUCTION	CVC	EA 1
13	6	PAOZZ	5935-00-815-0514	MS3102R1681P	96906	CONNECTOR, ELECTRICAL: COMPRESSOR POWER INPUT	EA	1
13	7	XBOZZ		13214E3659	97403	BUSHING: COMPRESSOR MTC	EA	4
13	8	PAOZZ	5310-00-401-3365	13211E8170	97403	WASHER: COMPRESSOR MTC	EA	8
13	9	PAOZZ	5305-00-235-4727	13211E8166	97403	SCREW, SHOULDER: COMPRESSOR MTC	EA	4
13	10	PAOZZ		13214E3476	97403	WASHER: COMPRESSOR MTC	EA	4

Figure 13. Compressor assembly.



TS 4120-336-24P/14

(1) ILLUSTRATION		(2)	(3)	(4)	(5)	(6)	(7)	(8)
(a) FIG NO.	(b) ITEM NO.	SMR CODE	NATIONAL STOCK NUMBER	PART NUMBER	FSCM	DESCRIPTION	U/M	QTY INC IN UNIT
						<i>USABLE ON CODE</i>		
						Group 13- ACCESSORY ITEMS		
14	1	PAOZZ	5305-00-984-6195	MS35206-247	96906	SCREW, MACHINE: SOUND ATTENUATOR MTC, NO. 8-32 THD SIZE, 3/4 IN. LG	EA	6
14	2	XBOZZ		13214 E3575	97403	SOUND ATTENUATOR	EA	1
14	3	PAOZZ		MS3106R20-4SX	96906	CONNECTOR, ELECTRICAL : AIR CONDITIONER POWER INPUT	EA	1
14	4	PAOZZ	5305-00-9 84-6194	MS35206-246	96906	SCREW, MACHINE: COVER MTC, NO. 8-32 THD SIZE, 5/8 IN. LG	EA	12
14	5	PAOZZ	5310-00-821-2366	13214E3469	97403	WASHER: COVER MTC	EA	12
14	6	PAOZZ	5305-00-984-6212	MS35206-265	96906	SCREW, MACHINE: COVER MTC, NO. 10-32 THD SIZE, 3/4 IN. LG	EA	4
14	7	PAOZZ		XX78326-20	83058	FASTENER, TURNBUTTON: COVER MTC, NO. 8-32 THD SIZE	EA	2
14	8	PBOZZ	4130-00-151-7248	13214 E3534	97403	COVER, CANVAS	EA	1
14	9	PAOZZ	5330-00-2 85-9314	R655-71C110	97450	GASKET: COVER MTC	EA	4

Figure 14. Accessory items.

(1) ILLUSTRATION (A) FIG NO	(2) (B) ITEM NO	(3) SMR CODE	(4) NATIONAL STOCK NUMBER	(5) PART NUMBER	(6) DESCRIPTION	(7) USABLE ON CODE	(8) QTY INC IN UNIT
GROUP 14 - BULK MATERIAL							
BULK	PAOZZ		AA6061T525INOD	80204	TUBE, ALUMINUM (AS REQUIRED)	CVC	FT V
BULK	PAOZZ		ASTMD1056SBE42CF2	81346	RUBBER SHEET (AS REQUIRED)	CVC	FT V
BULK	PAOZZ	5640-00-116-6870	MILI14511	81349	INSULATION (AS REQUIRED)	CVC	FT V
BULK	PAOZZ		MILI23053-2CL1	81349	INSULATION SLEEVING (AS REQUIRED)	CVC	FT V
BULK	PAOZZ		MILT43435SIZE3TYPE	81349	TAPE, IMPREGNATED, LACING AND TYING (AS REQUIRED)	CVC	FT V
BULK	PAOZZ	4710-00-059-5900			TUBE, COPPER (AS REQUIRED)	CVC	FT V
BULK	PAOZZ	4710-00-203-3171			TUBE, COPPER (AS REQUIRED)	CVC	FT V
BULK	PAFZZ	4710-00-203-3172			TUBE, COPPER (AS REQUIRED)	CVC	FT V
BULK	PAFZZ	4710-00-277-5330			TUBE, COPPER (AS REQUIRED)	CVC	FT V
BULK	PAOZZ	4710-00-554-8692			TUBE, COPPER (AS REQUIRED)	CVC	FT V
BULK	PAOZZ	6145-00-578-7513	M5086-2-10-9	81349	WIRE, ELECTRICAL (AS REQUIRED)	CVC	FT V
BULK	PAOZZ	6145-00-578-7516	M5086-1-14-9	81349	WIRE, ELECTRICAL (AS REQUIRED)	CVC	FT V
BULK	PAOZZ	6145-00-578-7517	M5086-1-16-9	81349	WIRE, ELECTRICAL (AS REQUIRED)	CVC	FT V
BULK	PAOZZ	6145-00-578-7521	M5086-1-12-9	81349	WIRE, ELECTRICAL (AS REQUIRED)	CVC	FT V
BULK	XBOZZ		13218E9891-40	97403	LEAD, ELECTRICAL	CUS	EA 1
BULK	PAOZZ		MS25036-112	96906	TERMINAL, LUG	CUS	EA 1
BULK	XBOZZ		13218E9891-37	97403	LEAD,ELECTRICAL	CUS	EA 1
BULK	PAOZZ		MS25036-153	96906	TERMINAL, LUG	CUS	EA 1
BULK	XBOZZ		13218E9891-36	97403	LEAD, ELECTRICAL	CUS	EA 1
BULK	PAOZZ		MS25036-153	96906	TERMINAL, LUG	CUS	EA 1
BULK	XBOZZ		13218E9891-35	97403	LEAD, ELECTRICAL	CUS	EA 1
BULK	PAOZZ		MS25036-106	96906	TERMINAL, LUG	CUS	EA 1
BULK	XBOZZ		13218E9891-34	97403	LEAD, ELECTRICAL	CUS	EA 1
BULK	PAOZZ		MS25036-153	96906	TERMINAL, LUG	CUS	EA 1
BULK	PAOZZ		42332-2	00779	TERMINAL, LUG	CUS	EA 1
BULK	XBOZZ		13218E9891-33	97403	LEAD, ELECTRICAL	CUS	EA 1
BULK	PAOZZ		MS25036-153	96906	TERMINAL, LUG	CUS	EA 1
BULK	XBOZZ		13218E9891-31	97403	LEAD, ELECTRICAL	CUS	EA 1
BULK	PAOZZ		MS25036-153	96906	TERMINAL, LUG	CUS	EA 1
BULK	XBOZZ		13218E9891-32	97403	LEAD, ELECTRICAL	CUS	EA 1
BULK	PAOZZ		MS25036-153	96906	TERMINAL, LUG	CUS	EA 1
BULK	XBOZZ		13218E9891-29	97403	LEAD, ELECTRICAL	CUS	EA 1
BULK	PAOZZ		MS25036-153	96906	TERMINAL, LUG	CUS	EA 1
BULK	XBOZZ		13218E9891-28	97403	LEAD, ELECTRICAL	CUS	EA 1
BULK	PAOZZ		MS25036-108	96906	TERMINAL, LUG	CUS	EA 1
BULK	PAOZZ		MS25036-153	96906	TERMINAL, LUG	CUS	EA 1
BULK	XBOZZ		13218E9891-26	97403	LEAD, ELECTRICAL	CUS	EA 1
BULK	XBOZZ		13218E9891-27	97403	LEAD, ELECTRICAL	CUS	EA 1
BULK	PAOZZ		MS25036-153	96906	TERMINAL, LUG	CUS	EA 1

SECTION IV - INDEX-NATIONAL STOCK NUMBER AND REFERENCE NUMBER

CROSS REFERENCE TO FIGURE AND ITEM NUMBER

STOCK NUMBER	FIGURE NO	ITEM NO	STOCK NUMBER	FIGURE NO	ITEM NO
5945-00-007-7668	3	36	3110-00-144-8755	7	3
5945-00-007-7669	3	35	5940-00-150-4682	3	
4730-00-007-9399	2	57	4130-00-151-7248	14	8
4130-00-008-7640	3	42	5305-00-163-8349	8	1
5925-00-009-3005	3	16	9905-00-165-7470	3	29
5310-00-014-5850	4	18	5310-00-167-0767	13	2
5310-00-043-0520	10	50	5355-00-171-2442	3	7
5310-00-044-6143	1	2	5970-00-173-2385	4	2
	6	5	6105-00-177-2458	7	8
	8	9	4730-00-189-2739	10	55
	10	2	4710-00-203-3172	10	
	14	5	4730-00-203-4919	10	42
5310-00-045-3296	3	26	5340-00-205-6301	10	27
	4	7		11	3
5310-00-045-3299	1	5	5935-00-221-8620	9	4
	2	27	5315-00-234-1856	2	48
	3	25	5305-00-235-4727	13	9
	10	39	5920-00-240-4066	3	47
	11	44	5360-00-240-6526	2	49
5310-00-045-4007	12	5	5920-00-243-9331	3	45
5305-00-053-1114	5	4	5305-00-247-6226	3	21
	9	3	5325-00-254-4718	4	16
5305-00-059-4553	3	46	5325-00-263-6632	9	6
5310-00-060-2039	9	7		11	8
5310-00-061-7326	4	21	4730-00-263-6460	11	3
5305-00-068-0505	2	53	5305-00-269-3212	6	11
4130-00-073-8404	10	36	5310-00-275-6813	3	6
4130-00-073-8405	10	45	5930-00-275-7800	12	7
4730-00-079-0267	10	67	4730-00-277-7922	10	6
5310-00-080-6004	6	10	4730-00-278-8908	10	46
	10	17	5305-00-283-4649	2	19
	11	14	5940-00-283-5280	3	
5310-00-081-4219	6	14		4	
5310-00-081-8087	2	42	5330-00-285-9314	2	13
	3	33		14	9
	5	1	5325-00-286-6047	4	15
	9	18		11	11
5310-00-082-1404	9	20	5320-00-296-3092	2	7
5310-00-088-0551	2	31	5935-00-318-1819	9	33
	9	13	5930-00-396-2244	9	37
5305-00-088-8923	10	52	5310-00-401-3365	13	8
5305-00-088-9044	4	17	5310-00-407-9566	6	15
6105-00-103-2164	6	17	5330-00-409-3350	10	34
	7		5305-00-409-3795	7	1
5340-00-103-2976	4	8	5945-00-430-6933	9	21
4130-00-105-9292	2	9	2990-00-451-4838	3	9
4130-00-106-1971	7	9	5355-00-472-9354	4	4
4130-00-106-1972	9	11	5945-00-482-5771	3.1	1
4130-00-106-1973	11	48	5305-00-485-8512	7	5
4130-00-106-1975	10	9	5305-00-486-2597	7	7
4130-00-106-1976	10	72	5310-00-530-9963	2	37
4140-00-106-2488	6	2	5325-00-530-9963	2	34
5961-00-106-5259	3	44	5340-00-533-5342	9	16
4130-00-106-5657	2	39		11	56
5945-00-106-7100	9	21	5340-00-543-4394	4	13
4820-00-107-0992	11	16		10	23
4810-00-109-3830	9	38		11	20
	10	73	5945-00-549-6348	3	56
4540-00-110-3729	8	4	5340-00-565-0004	11	47
4130-00-110-9515	13	3	5935-00-565-9503	9	42
5950-00-111-4720	3	27	5355-00-579-2896	4	3
5330-00-119-7503	8	7	5310-00-582-5965	10	49
3110-00-136-2696	2	50		10	51
5940-00-143-4774	3		5310-00-596-7691	3	8
	4		5305-00-621-5305	3	1
	9	40	5310-00-637-9541	10	16
5940-00-143-4775	3			11	13
5940-00-143-4780	3		5930-00-683-1628	4	20
	4		5935-00-721-0488	9	34
	9	12	5315-00-730-4564	6	8
5940-00-143-4794	3		5315-00-730-4570	6	3
5940-00-143-7494	3		5935-00-755-2892	3	



TM5-4120-336-24P  
SECTION IV-INDEXT-NATIONAL STOCK NUMBER AND REFERENCE NUMBER  
CROSS REFERENCE TO FIGURE AND ITEM NUMBER

STOCK NUMBER	FIGURE NO	ITEM NO	STOCK NUMBER	FIGURE NO	ITEM NO
5935-00-755-3493	9	28	5305-00-984-6195	2	1
5935-00-800-9858	9	27		3	41
5310-00-809-4058	2	54		14	1
5310-00-809-8544	1	6	5305-00-984-6196	1	8
	2	28		3	20
	9	9	5305-00-984-6222	9	19
	10	32	5305-00-989-7434	4	6
5310-00-811-3494	3	40	5305-00-989-7435	3	55
5310-00-814-0673	13	1		4	22
5935-00-815-0514	13	6		10	43
4730-00-815-5664	10	11		10	61
	11	26	4130-00-991-8260	5	5
5935-00-821-0345	7	6		9	35
5340-00-823-5322	9	43	5305-00-993-1848	1	1
5330-00-828-3628	3	39		8	6
5330-00-836-4355	9	5		14	6
4730-00-837-0685	11	40	5305-00-993-1851	4	1
5935-00-851-9080	9	31	5305-00-993-2738	10	48
5935-00-853-1913	9	32	5305-00-995-3441	10	26
5305-00-857-5867	8	8		11	12
	10	1		11	32
5940-00-859-4475	4		5305-00-995-1442	9	15
5310-00-877-5797	3	23		10	64
5310-00-877-5798	8	5		11	18
	10	21	5305-00-995-3444	3	24
	11	17			
5935-00-879-0235	9	26			
5310-00-880-9344	2	21	ADDITIONAL STOCK NUMBERS		
	3	2			
	8	3			
5920-00-887-6491	3	50	STOCK NUMBER	FIGURE NO.	ITEM NO.
5310-00-889-2549	4	9			
5305-00-889-3001	5	2	5910-00-007-7724	9	23
5310-00-902-6676	3	17	5310-00-014-5850	3	25
5930-907-8948	4	5	4730-00-022-1334	11	62
4730-00-908-3194	2	46	5305-01-025-5770	3	11
5999-00-914-2318	9	29	5340-01-039-9103	8	2
5330-00-914-7651	3	43	5365-01-040-1488	10	18
5930-00-923-4176	4	14	5910-01-152-5751	3	28
5910-00-927-2738	9	23	5910-01-067-0000	3.1	2
5305-00-929-6558	6	1		11	15
5320-00-932-1972	1	11	5935-00-081-1233	9	10
	2	10	5340-00-105-8328	4	3
	4	23		10	23
5975-00-937-3680	9	36		11	20
5920-00-939-5442	3	49	5340-00-106-0549	10	27
4730-00-950-5276	11	51	5340-00-106-0550	11	56
5305-00-958-0585	10	22	5340-00-106-0551	11	47
5305-00-958-0588	10	58	5340-00-106-0599	11	3
5305-00-984-4976	9	14	4130-00-106-5657	9	25
5305-00-984-4983	3	11		9	30
5305-00-984-4984	12	4	4130-00-106-5662	3	38
5305-00-984-4988	3	13	4130-00-106-5663	4	19
5305-00-984-4989	3	34	5940-00-143-4780	3	
5305-00-984-4992	2	43	4730-00-189-2737	10	15
	3	37	5306-00-225-8503	6	12
	12	1	4730-00-257-2163	10	42
5305-00-984-6193	4	10	5305-00-356-6102	3	3
	10	38	3110-00-554-3459	7	3
	11	43	5310-00-579-0079	3	12
	3	31	5330-00-808-0794	3	1
5305-00-984-6194	1	13	4730-00-818-5201	11	40
	2	12	5310-00-821-2366	6	5
	4	12		8	9
	6	4		10	2
	9	1		14	5
	9	8	4730-00-821-9184	11	55
	10	31	4730-00-822-1274	10	30
	14	4		11	7
5305-00-984-6195	1	4	5310-00-935-9021	6	9
			4820-00-936-2235	10	65
			5305-00-984-6212	14	6

SECTION IV - INDEX-NATIONAL STOCK NUMBER AND REFERENCE NUMBER  
 CROSS REFERENCE TO FIGURE AND ITEM NUMBER

REFERENCE NO	MFG CODE	FIG NO	ITEM NO	REFERENCE NO	MFG CODE	FIG NO	ITEM NO
AA6061T5251	80201	2	24	MS25036-106	96906	4	
ADK052	70255	10	54	MS25036-108	96906	3	
AD42H	07707	1	11		96906	4	
	07707	2	10		96906	9	12
	07707	4	23	MS25036-112	96906	3	
AD45H	07707	2	23	MS25036-153	96906	3	
AN970-5	88044	13	2		96906	4	
APGH11R1799-4	81541	3	16		96906	9	40
ASTMD1056SBE	81346	2	6	MS25036-156	96906	3	
ASTMD1056SBE42	81346	2	4	MS25043-20D	96906	9	4
ASTMD1056SBE42CF	81346	1	10	MS25165-1	96906	4	3
	81346	2	16	MS25251-12	96906	9	42
	81346	2	56	MS25251-16	96906	9	43
ASTMD1056SBE42CF2	81346	2	36	MS27183-10	96906	2	54
ASTMD1056SBF42C	81346	1	15	MS27183-12	96906	6	14
AS041	41947	10	57	MS27183-14	96906	6	10
A19AGF10	92578	4	14		96906	10	17
A37693	41625	3	9		96906	11	14
B43310-1	41625	3	7	MS27183-42	96906	3	25
B48701X22-00	41625	3	10		96906	4	18
C1-13473	95970	3	27	MS27183-6	96906	9	20
C13853-1420	78553	3	6	MS27183-7	96906	1	6
C6974-20-41	78553	5	5		96906	2	28
	78553	9	35		96906	9	9
DB92100	49367	9	36		96906	10	32
F09A250V2A	81349	3	45	MS3100R20-4PX	96906	9	33
G2A53-120-50	79221	13	4	MS3100R28-17S	96906	9	32
KAW5	71400	3	49	MS3102R14S6P	96906	7	6
KB137P206	93799	9	23	MS3102R16S1P	96906	13	6
MIL-J6VBC-610	45236	13	3	MS3102R28-9S	96906	3	
MILP15280FORMT	81349	11	10	MS3102R32-70	96906	3	
	81349	11	22	MS3106R14S6S	96906	9	34
MILT22085TYPE1	81349	11	9	MS3106R16S1S	96906	9	27
	81349	11	21	MS3106R16-10S	96906	9	28
MIL1145	81349	2	15	MS3106R20-4SX	96906	14	3
MIL114511	81349	2	22	MS3106R28-9P	96906	9	26
MODEL104ADEVICE700	91494	11	48	MS3106R32-7S	96906	9	31
MS20066-143	96906	6	8	MS35190-238	96906	3	46
MS20066-145	96906	6	3	MS35205-247	96906	1	4
MS20426AD4-5-5	96906	2	7	MS35206-217	96906	2	30
MS21044D3	96906	8	5	MS35206-219	96906	9	14
	96906	10	21	MS25206-226	96906	3	11
	96906	11	17	MS35206-227	96906	12	4
MS21044D08	96906	9	7	MS35206-228	96906	3	13
MS21044N04	96906	2	31	MS35206-229	96906	3	34
	96906	9	13	MS35206-231	96906	3	52
MS21044N06	96906	2	42		96906	5	2
	96906	3	33	MS35206-232	96906	2	43
	96906	5	1		96906	3	37
	96906	9	18		96906	12	1
MS21044N08	96906	3	40	MS35206-235	96906	9	19
MS21044N3	96906	3	23	MS35206-245	96906	3	31
MS21045-08	96906	4	9		96906	4	10
MS21045-3	96906	4	21		96906	10	38
MS21083N3	96906	2	17		96906	11	43
MS21104DB	96906	9	16	MS35206-246	96906	1	13
MS21104D3	96906	3	21		96906	2	12
MS21104D4	96906	10	27		96906	4	12
	96906	11	3		96906	6	4
MS21104D6	96906	4	13		96906	9	1
	96906	10	23		96906	9	8
	96906	11	20		96906	10	31
MS21104D8	96906	11	56		96906	14	4
MS21104D10	96906	11	47	MS35206-247	96906	2	1
MS21919H6	96906	4	8		96906	3	41
MS24192D1	96906	3	56		96906	14	1
MS24523-22	96906	4	20	MS35206-248	96906	1	8
MS24586C48	96906	2	41		96906	3	20
MS24621-11	96906	5	4	MS35207-260	96906	4	17
	96906	9	3	MS35207-263	96906	4	6
MS24665-155	96906	2	48	MS35207-264	96906	3	55
MS25036-106	96906	3			96906	4	22

SECTION IV - INDEX-NATIONAL STOCK NUMBER AND REFERENCE NUMBER  
 CROSS REFERENCE TO FIGURE AND ITEM NUMBER

REFERENCE NO	MFG CODE	FIG NO	ITEM NO	REFERENCE NO	MFG CODE	FIG NO	ITEM NO
MS35207-264	96906	10	43	R655-71C122-2	97450	10	59
	96906	10	61	R655-71C137	97450	10	3
MS35207-265	96906	1	1	R655-71C138	97450	10	4
	96906	8	6	R655-71C140-1	97450	10	5
	96906	14	6	R655-71C142-2	97450	3	19
MS35207-266	96906	3	24	R655-71C143	97450	3	18
MS35207-267	96906	4	1	R655-71D114	97450	6	7
MS35207-268	96906	9	15	SAK13	78462	10	36
	96906	10	64	SS0329	58849	3	44
	96906	11	18	TCL50HW120-10A	70255	10	20
MS35207-269	96906	10	26	TCL25CL15A	70255	11	16
	96906	11	12	VUS3-46AC	07295	10	65
	96906	11	32	WHP622H6-115-1	01479	13	3
MS35207-272	96906	10	22	W1706	41947	10	30
MS35207-280	96906	10	48		41947	11	7
MS35207-285	96906	10	52	W2009	41947	11	40
MS35207-287	96906	10	58	W4004	41947	11	51
MS35298-3	96906	10	6	W40324	41947	10	67
MS35333-37	96906	3	12	W40330	41947	10	13
MS35333-32	96906	3	8		41947	11	26
MS35338-41	96906	12	5	W40350	41947	11	55
MS35338-42	96906	1	5	W4208	41947	10	46
	96906	2	27	W2312	41947	10	6
	96906	10	39	XX78326-20	83058	14	7
	96906	11	44	006-10245	74193	3	15
MS35338-43	96906	3	26	01-005248-084	64731	7	3
	96906	4	7	01-008773-020	64731	7	9
MS35338-44	96906	10	49	0158	93781	9	38
	96906	10	51		93781	10	73
MS35338-45	96906	6	15	02-009089-000	64731	7	8
MS35338-46	96906	10	16	02-009264-002	64731	7	4
	96906	11	13	02-009264-003	64731	7	7
MS35490-1	96906	4	15	02-009264-004	64731	7	1
	96906	11	11	02-009264-005	64731	7	1
MS35490-6	96906	9	6	02-009350-000	64731	7	2
	96906	11	8	02-010389-001	64731	7	10
MS35490-12	96906	11	24	1000	75543	4	16
MS35650-3252	96906	10	50	12-11-203-11	94222	3	1
MS35842-11	96906	2	46	12-11-303-11	94222	3	3
MS35872-2	96906	10	15	12-11-613-11	94222	8	1
MS35872-3	96906	10	55	12-11-713-11	94222	2	19
MS35917-3	96906	11	40	12-11014-12	94222	2	21
MS35919-2-2	96906	11	53		94222	3	2
MS35928-4	96906	11	62		94222	8	3
MS35929-2	96906	10	42	12S1-14-1AA	71286	2	34
MS35929-3	96906	11	31	13211E8166	97403	13	9
MS51007-10	96906	3	39	13211E8178	97403	2	57
MS51007-12	96906	3	43	13211E8242	97406	10	35
MS51007-7	96906	9	5	13211E8288	97403	4	
MS51021-62	96906	6	1	13211E8376-1	97403	10	62
MS51943-33	96906	13	1	13211E8376-3	97403	10	18
MS51943-35	96906	6	9		97403	11	15
MS90725-39	96906	6	12	13211E8399C28-17P	97403	4	
MS90725-61	96906	6	11	13211E8170	97403	13	8
MS90725-5	96906	2	53	13211E8406-2	97403	10	59
MS9122-03	96906	8	8	13211E8411	97403	2	50
	96906	10	1	13211E8215	97403	1	20
MS91528-1C4B	96906	4	4	13211E8273	97403	9	2
MTS004	04009	9	21	13211E8305	97403	2	40
MWA1256	82647	9	11	13211E8322	97403	2	39
NAS1523C3F	80205	8	7	13211E8323	97403	2	47
NTP25	93410	9	39	13211E8369	97403	10	45
PM4030	77342	9	21	13211E8376-1	97403	9	17
PT1	87698	10	11	13211E8376-2	97403	10	24
	87698	11	61	13211E8376-3	97403	3	22
R655-71C105	97450	9	44	13211E8412	97403	2	49
R655-71C106	97450	10	63	13214E3365	97403	2	58
R655-71C110	97450	2	10	13214E3372-1	97403	11	19
	97450	14	9	13214E3372-2	97403	10	28
R655-71C111	97450	2	11		97403	11	33
R655-71C118	97450	3	28	13214E3384	97403	2	14
R655-71C122-1	97450	10	53	13214E3386	97403	2	55

SECTION IV-INDEX-NATIONAL STOCK NUMBER AND REFERENCE NUMBER  
 CROSS REFERENCE TO FIGURE AND ITEM NUMBER

REFERENCE NO	MFG CODE	FIG NO	ITEM NO	REFERENCE NO	MFG CODE	FIG NO	ITEM NO
13214E3412	97403	3	4	13218E7079-6	97403	2	17
13214E3416	97403	8	2	13218E8064	97403	1	16
13214E3419	97403	10	33	13218E8065	97403	1	14
13214E3456	97403	9	25	13218E9882	97403	2	25
13214E3462	97403	4	19	13218E9887-1	97403	3	
13214E3469	97403	1	2	13218E9894	97403	9	30
	97403	2	2	13218E9896	97403	3	42
	97403	6	5	13218E9897	97403	3	32
	97403	8	9	13218E9908-3	97403	4	
	97403	10	2	13218E9909	97403	4	25
	97403	14	5	13218E9911	97403	4	11
13214E3471-1	97403	2	32	13218E9912	97403	4	24
13214E3471-1	97403	2	45	13218E9913	97403	3	57
	97403	5	6	13218E9948	97403	2	20
13214E3471-2	97403	2	4	13219E2927	97403	3	
	97403	5	3	13219E9540	97403	10	66
13214E3476	97403	13	10	13219E9891	97403	3	28
13214E3477	97403	2	3	13220E5281	97403	2	13
13214E3478	97403	2	5	13220E5385-2	97403	3	19
13214E3484	97403	2	52	13220E5386	97403	3	18
13214E3486	97406	2	51	13220E5413-1	97403	10	5
13214E3531	97403	9	22	13220E5414	97403	10	4
13214E3544	97403	1	7	13220E5415	97403	10	3
13214E3546	97403	2	38	13220E6701	97403	2	25
13214E3547	97403	6	6	13220E6703	97403	9	30
13214E3551	97403	1	9	13220E6995	97403	2	58
13214E3552	97403	6	16	13230E5672	97403	9	44
13214E3553	97403	10	72	210AP10AN	92578	12	8
13214E3554	97403	10		210AP40AN	92578	12	7
13214E3556	97403	2	29	2819	71400	3	50
13214E3457-1	97403	9	10	35F212BA6	56699	3.1	2
13214E3527	97403	9	24	39TB8	75382	3	54
13214E3554	97403	14	8	41100	73386	3	27
13214E3558	97403	6	7	416-25	93410	9	39
13214E3559	97403	6	2	4515	71400	3	47
13214E3561	97403	8	4	4715-20	64731	6	17
13214E3575	97403	14	2	475132	01479	13	4
13214E3578-2	97403	12	6	475828	01479	13	5
13214E3592-2	97403	19	40	5S3-1	71286	2	37
13214E3629-2	97403	8	10	520600	97899	9	23
13214E3659	97403	13	7	6PS306N405N285L	82647	9	37
13214E3662	97403	1	18	699JJ6F	75382	3	53
13214E3665	97403	5		70034-181	91494	11	48
13214E3685-2	97403	3	29	8912K216	15605	4	5
13214E3689	97403	5	7	908015	82866	2	9
13214E3704-2	97403	2	3				
13214E3706-2	97403	2	5				
13214E3724	97403	3	38				
13214E3726	97403	3	51				
13214E3728-1	97403	7					
13214E3762	97403	4	2				
13214E3798-1	97403	10	71				
13214E3814	97403	3	48				
13215E9828	97403	3	14				
13216E6182-2	97403	3	36				
13216E6182-3	97403	3	35				
13216E6191-2	97403	9	29				
13216E6192	97403	3					
13216E6206-4	97403	3	16				
13216E6240-1	97403	3.1	1				
13216E9517	97403	1	3				
13216E9519-2	97403	12	3				
13216E9520-2	97403	12	2				
13217E2344	97403	2	8				
13217E5636	97403	6	13				
13217E6814	97403	1	12				
13218E6975	97403	10	65				
13218E6977	97403	1	4				
13218E7076	97403	2	35				
13218E7077	97403	2	33				
13218E7078	97403	1	19				
13218E7079	97403	2	17				

**By Order of the Secretary of the Army:**

**BERNARD W. ROGERS**  
*General, United States Army*  
*Chief of Staff*

**Official:**

**J. C. PENNINGTON**  
*Brigadier General, United States Army*  
*The Adjutant General*

**Distribution:**

To be distributed in accordance with DA Form 12-25C, Organizational maintenance requirements for Environmental Equipment: Air Conditioners, 6,000 BTU.



# SOMETHING WRONG WITH THIS MANUAL?

THEN... JOT DOWN THE DOPE ABOUT IT ON THIS FORM, TEAR IT OUT, FOLD IT AND DROP IT IN THE MAIL!

FROM: (YOUR UNIT'S COMPLETE ADDRESS)  
 PFC JOHN DOE  
 CoA, 3<sup>d</sup> ENGINEER BN  
 FT. LEONARD WOOD MO 63108

DATE 19 JAN 79

PUBLICATION NUMBER  
 TM 5-4120-336-24P

DATE  
 20 DEC 78

TITLE  
 AIR CONDITIONER, VERTICAL  
 NSN 4120-00-935-1608

BE EXACT... PIN-POINT WHERE IT IS

IN THIS SPACE TELL WHAT IS WRONG AND WHAT SHOULD BE DONE ABOUT IT:

PAGE NO.	PARA-GRAPH	FIGURE NO.	TABLE NO.
6	2-1 a		
81		4-3	
125	line 20		

In line 6 of paragraph 2-1a the manual states the engine has 6 cylinders. The engine on my set only has 4 cylinders. Change the manual to show 4 cylinders

Callout 16 on figure 4-3 is pointing at a bolt. In the key to fig. 4-3, item 16 is called a shim. Please correct one or the other.

I ordered a gasket, item 19 on figure B-16 by NSN 2910-00-762-3001. I got a gasket but it doesn't fit. Supply says I got what I ordered so the NSN is wrong. Please give me a good NSN

TYPED NAME, GRADE OR TITLE, AND TELEPHONE NUMBER  
 JOHN DOE, PFC (268) 317-7111

SIGN HERE:  
 John Doe

DA FORM 2028-2 (TEST)  
 1 AUG 74

P.S.--IF YOUR OUTFIT WANTS TO KNOW ABOUT YOUR MANUAL "FIND," MAKE A CARBON COPY OF THIS AND GIVE IT TO YOUR HEADQUARTERS.

TEAR ALONG DOTTED LINE

RECOMMENDED CHANGES TO EQUIPMENT TECHNICAL MANUALS



# SOMETHING WRONG WITH THIS MANUAL?

THEN... JOT DOWN THE DOPE ABOUT IT ON THIS FORM, TEAR IT OUT, FOLD IT AND DROP IT IN THE MAIL!

FROM: (YOUR UNIT'S COMPLETE ADDRESS)

DATE

PUBLICATION NUMBER

TM 5-4120-336-24P

DATE

20 DEC 1978

TITLE

AIR CONDITIONER, VERTICAL  
NSN 4120-00-935-1608

BE EXACT... PIN-POINT WHERE IT IS

IN THIS SPACE TELL WHAT IS WRONG AND WHAT SHOULD BE DONE ABOUT IT:

PAGE NO.

PARA-GRAPH

FIGURE NO.

TABLE NO.

TEAR ALONG DOTTED LINE

TYPED NAME, GRADE OR TITLE, AND TELEPHONE NUMBER

SIGN HERE:

DA FORM 2028-2 (TEST)  
1 AUG 74

P.S.--IF YOUR OUTFIT WANTS TO KNOW ABOUT YOUR MANUAL "FIND" MAKE A CARBON COPY OF THIS AND GIVE IT TO YOUR HEADQUARTERS.

FILL IN YOUR  
UNIT'S ADDRESS

FOLD BACK

DEPARTMENT OF THE ARMY

OFFICIAL BUSINESS

Commander  
US Army Troop Support and Aviation  
Materiel Readiness Command  
ATTN: DRSTS-MTPS  
4300 Goodfellow Boulevard  
St. Louis, MO 63120

TEAR ALONG DOTTED LINE

FOLD BACK



# The Metric System and Equivalents

## Linear Measure

1 centimeter = 10 millimeters = .39 inch  
 1 decimeter = 10 centimeters = 3.94 inches  
 1 meter = 10 decimeters = 39.37 inches  
 1 dekameter = 10 meters = 32.8 feet  
 1 hectometer = 10 dekameters = 328.08 feet  
 1 kilometer = 10 hectometers = 3,280.8 feet

## Liquid Measure

1 centiliter = 10 milliliters = .34 fl. ounce  
 1 deciliter = 10 centiliters = 3.38 fl. ounces  
 1 liter = 10 deciliters = 38.82 fl. ounces  
 1 dekaliter = 10 liters = 2.64 gallons  
 1 hectoliter = 10 dekaliters = 26.42 gallons  
 1 kiloliter = 10 hectoliters = 264.18 gallons

## Weights

1 centigram = 10 milligrams = .15 grain  
 1 decigram = 10 centigrams = 1.54 grains  
 1 gram = 10 decigrams = .035 ounce  
 1 dekagram = 10 grams = .35 ounce  
 1 hectogram = 10 dekagrams = 3.52 ounces  
 1 kilogram = 10 hectograms = 2.2 pounds  
 1 quintal = 100 kilograms = 220.46 pounds  
 1 metric ton = 10 quintals = 1.1 short tons

## Square Measure

1 sq. centimeter = 10 sq. millimeters = .155 sq. inch  
 1 sq. decimeter = 100 sq. centimeters = 15.5 sq. inches  
 1 sq. meter (centare) = 100 sq. decimeters = 10.76 sq. feet  
 1 sq. dekameter (are) = 100 sq. meters = 1,076.4 sq. feet  
 1 sq. hectometer (hectare) = 100 sq. dekameters = 2.47 acres  
 1 sq. kilometer = 100 sq. hectometers = .386 sq. mile

## Cubic Measure

1 cu. centimeter = 1000 cu. millimeters = .06 cu. inch  
 1 cu. decimeter = 1000 cu. centimeters = 61.02 cu. inches  
 1 cu. meter = 1000 cu. decimeters = 35.31 cu. feet

## Approximate Conversion Factors

To change	To	Multiply by	To change	To	Multiply by
inches	centimeters	2.540	ounce-inches	newton-meters	.007062
feet	meters	.305	centimeters	inches	.394
yards	meters	.914	meters	feet	3.280
miles	kilometers	1.609	meters	yards	1.094
square inches	square centimeters	6.451	kilometers	miles	.621
square feet	square meters	.093	square centimeters	square inches	.155
square yards	square meters	.836	square meters	square feet	10.764
square miles	square kilometers	2.590	square meters	square yards	1.196
acres	square hectometers	.405	square kilometers	square miles	.386
cubic feet	cubic meters	.028	square hectometers	acres	2.471
cubic yards	cubic meters	.765	cubic meters	cubic feet	35.315
fluid ounces	milliliters	29.573	cubic meters	cubic yards	1.308
pints	liters	.473	milliliters	fluid ounces	.034
quarts	liters	.946	liters	pints	2.113
gallons	liters	3.785	liters	quarts	1.057
ounces	grams	28.349	liters	gallons	.264
pounds	kilograms	.454	grams	ounces	.035
short tons	metric tons	.907	kilograms	pounds	2.205
pound-feet	newton meters	1.365	metric tons	short tons	1.102
pound-inches	newton-meters	.11375			

## Temperature (Exact)

°F Fahrenheit temperature	5/9 (after subtracting 32)	Celsius temperature	°C
------------------------------	-------------------------------	------------------------	----

**PIN: 005800-002**